

AGING AND DYING IN PRISON

An Investigation into the Experiences of
Older Individuals in Federal Custody



The Correctional Investigator
Canada



Canadian
human rights
commission

Commission
canadienne des
droits de la personne

Erratum

Correction to Report

Date: March 18, 2024

We would like to bring to your attention a correction to the report, *Aging and Dying in Prison: An Investigation into the Experiences of Older Individuals in Federal Custody*, published on February 28, 2019. A calculation error was identified in the “Regional and Institutional Inmate Population by Age” table in Annex A, which has since been corrected as of February 12, 2024. Please note that this correction does not impact the findings, nor the recommendations presented in the report.

Although the necessary changes have been made to the HTML and PDF versions of the report, we regret that the correction could not be applied to the print publication. We apologize for any inconvenience this may have caused.

Should you have any questions or require further clarification, please do not hesitate to contact our office at org@oci-bec.gc.ca.

Cat. No.: PS104-17/2019E-PDF

ISBN: 978-0-660-29380-6

© Her Majesty the Queen in Right of Canada, 2019

PRINTED IN CANADA

**Aging and Dying in Prison:
An Investigation into the Experiences of
Older Individuals in Federal Custody**

February 28, 2019

Table of Contents

Introduction.....	3
Methodology	7
Background.....	10
Finding 1: Some older, long-serving offenders are being warehoused behind bars	20
Finding 2: Failure to recognize and protect a vulnerable population	27
Finding 3: Prisons were never intended as facilities for older persons.....	35
Finding 4: As the number of inmates with chronic disease rises, so do correctional health care costs.....	45
Finding 5: Prison is no place for offenders who require end-of-life care	53
Finding 6: Lack of adequate and humane release options	59
Finding 7: Community alternatives are lacking and are not well resourced	65
Finding 8: Need for a comprehensive and funded national strategy.....	69
Conclusion	70
Summary of Major Findings	71
Summary of Recommendations.....	72
Annex A: Detailed Statistical Tables and Graphs	76
References.....	82

Introduction

Prisons were never intended to be nursing homes, hospices, or long-term care facilities. Yet increasingly in Canada, they are being required to fulfill those functions. The proportion of older individuals in federal custody (those 50 years of age and older) is growing. They now account for 25% of the federal prison population (3,534 individuals 50+; 3,432 men and 102 women of a total prison population of 14,004). This demographic has increased by 50% over the last decade alone. Rising correctional health care costs, palliative care, and higher incidence of chronic disease reflect, at least in part, the impacts of a population that is aging behind bars. In some cases, keeping them behind bars is neither necessary, appropriate nor cost-effective. Yet there are currently few community alternatives for this vulnerable segment of the prison population. Many older individuals in federal custody seem to be languishing behind bars. Their sentences are no longer being actively managed, and there are little or no interventions to assist in their rehabilitation and return to the community.

In so far as older individuals in federal custody are concerned, this joint investigation by the Office of the Correctional Investigator (the Office) and the Canadian Human Rights Commission (the Commission) finds a general failure on the part of the Correctional Service of Canada (CSC) to meet the fundamental purposes of the *Corrections and Conditional Release Act (CCRA)*: safe and humane custody and assisting in the rehabilitation and reintegration of offenders into the community.

The conditions of confinement of older individuals in federal custody are lacking in terms of personal safety and dignity, and the prospect of these individuals returning to the community is often neglected and overlooked, all of which jeopardizes the protection of their human rights. The findings of this investigative report show that CSC's treatment of older individuals in federal custody does not respect their human rights; is not justified in terms of institutional security or public safety; is inconsistent with the administration of lawful sentences imposed by courts, and; is unnecessarily costly to Canadians. CSC is falling short of ensuring that correctional interventions and services meet its obligations to respect and protect the inherent dignity, characteristics, needs and rights of older individuals in federal custody.

Under the *Canadian Human Rights Act*, the CSC is a service provider with an obligation to provide correctional services that respect people's characteristics which may require CSC to accommodate their needs related to prohibited grounds of discrimination in the Act, including age and disability, and also the intersection of more than one ground of discrimination (e.g. sex, gender identity or expression, race, national or ethnic origin, disability). This obligation is bolstered by section 4(g) of the *CCRA*, which requires CSC to ensure that correctional programs, policies and practices respect differences and respond to the special needs of offenders including those related to prohibited grounds of discrimination. CSC must ensure that respect for differences related to prohibited grounds of discrimination is reflected in the design and delivery of correctional services (including correctional policies, programs, practices and facilities). Based on case law from the Supreme Court of Canada, it is clear that CSC has an obligation to not only be aware of differences between federal offenders related to prohibited grounds of discrimination but also to "build conceptions of equality" into correctional services as far as reasonably possible. CSC's duty to accommodate the needs of older individuals may be limited by considerations of health, safety and cost where those considerations lead to undue hardship, but CSC bears the burden of demonstrating undue hardship.

Scope of the Investigation

The Office and the Commission together launched this investigation to give a 'voice' to older individuals in federal custody, some of whom have spent the greater part of their lives locked up. The findings of this investigation rely upon interviews conducted with more than 250 of these older individuals, who told their stories and brought forward their concerns. Hearing directly from older individuals is key to better understanding their experiences, challenges, and vulnerabilities, as well as the ways that the system could be improved for them. Interviews with individual older persons provided perspectives on the correctional system that can only be revealed through their eyes and their lived-experience.

This joint investigation focused on the following objectives:

1. Provide an overall statistical profile and assessment of correctional outcomes of all offenders aged 50 and over in federal custody and released to the community.

Additional statistics for those 65+ are also provided, including chronic disease prevalence and mental health status.

2. Gather information from older individuals in federal penitentiaries and those released and supervised in the community about their correctional experiences, challenges and vulnerabilities.
3. Assess and review policy, practices and actions taken by CSC to respond to the needs of this segment of the prison population (i.e. programming; education; employment; healthcare; release planning and reintegration; palliative and end-of-life care; and compassionate release).
4. Scope and assess the supervision and accommodation practices in the community to safely and successfully reintegrate older individuals.
5. Consider the characteristics, needs, conditions and experiences of individuals 50 years of age and older in federal custody from a human rights and dignity perspective (e.g. discrimination including ageism; accommodation; and accessibility).
6. Identify domestic and international best practices that may be useful in better managing older individuals in federal custody.

Partnership between the Office of the Correctional Investigator and the Canadian Human Rights Commission

This investigation was jointly conducted by the Office and the Commission. Both the Office and the Commission bring significant expertise to this investigation. The Office has been monitoring and tracking the challenges of older offenders for more than a decade and the Commission brings expertise with respect to human rights and disability, accessibility, discrimination and ageism. Collaboration between the two organizations was essential to better understand how best to ensure public safety while respecting and protecting the unique needs, dignity and rights of older individuals in federal custody. The two organizations are uniquely positioned to assess the vulnerabilities of this segment of the prison population and identify areas where changes in

organizational policy and practice are required. Staff from both organizations worked in close collaboration conducting interviews, reviewing literature and data, and the developing of joint findings and recommendations.

The benefit of this partnership was the ability to assess the conditions of confinement, physical environment and experience of older persons in federal penitentiaries from a human rights and human dignity perspective. Partnerships such as this are important examples of how independent agencies, such as the Office and the Commission, can bring expertise and different perspectives together to examine an issue, report on findings and make informed recommendations that stem from collaboration, insight, access and expertise.



Dr. Ivan Zinger
Correctional Investigator of Canada



Marie-Claude Landry, Ad. E.
Chief Commissioner
Canadian Human Rights Commission

The Office of the Correctional Investigator serves Canadians and contributes to safe, lawful and humane corrections through independent oversight of the Correctional Service of Canada by providing accessible, impartial and timely study of individual and systemic concerns.

The Canadian Human Rights Commission is an independent organization whose mission is to ensure that everyone is treated fairly, no matter who they are. The Commission protects the core principle of equal opportunity by promoting a vision of an inclusive society free from discrimination and by protecting human rights through a fair and effective complaints process.

Methodology

Defining an older offender

Establishing a working definition of what constitutes an older offender is challenging and definitions vary throughout the literature, ranging from 45 to 65 years of age.¹ In Canadian society, we often refer to those who are older or aging as individuals who have retired from the workforce, are receiving an old age pension or who are showing the physical effects of aging (generally 65 and over). Research shows that those admitted to federal custody often have poorer overall health, including higher prevalence of chronic and infectious diseases, than the Canadian general population. This is often a result of the life these individuals have led before coming into custody (e.g. substance abuse, lack of medical care, inadequate diet, mental health issues, homelessness, poverty). The overall health of those in a prison environment often mirrors the health conditions of individuals that may be up to ten years older in chronological age.² However, not all accept the notion of accelerated aging in the prison environment³ as it is also possible that better access for some to physical and mental healthcare in the prison environment mitigates the impact of accelerated ageing.

¹ Turner, S., & Trotter, C. (2010).

² See for example: Williams B.A., Stern M.F., Mellow J., Safer M., & Greifinger R. B. (2012); Human Rights Watch. (Jan. 2012); Office of the Inspector General. (2015); House of Commons Justice Committee. (2013); Curtin, T. (2007); Iftene, A. (2017b); Uzoaba, J.H.E. (1998); Kerbs, J.J., & Jolley, J.M. (2008); CSC. (Apr. 2014, May 2014; & Aug. 2014).

³ Williams B. A. et al. (2012).

Finally, the term “age” is not defined in the *Canadian Human Rights Act*. From a human rights perspective, age is a concept that must be interpreted and applied contextually. Given the adverse life experiences of many offenders and the negative impacts of prison on health, there is a need to understand the significance of age differently in this subpopulation of offenders and this must inform CSC’s human rights obligations.

Investigative Plan

The investigation employed a research and analytical strategy involving several distinct, but related components:

- Review of relevant literature related to aging and risk profile, and alternatives to incarceration.
- Quantitative data analysis of all individuals 50 years of age and older serving a federal sentence (2 years or more) in a penitentiary or those released to the community on day parole, statutory release or a long-term supervision order (CSC Data Warehouse was used for most of the statistical analysis).
- Individual investigative interviews were conducted by the OCI and the CHRC. Questions focused on areas such as access to programs and services, social activities, personal safety, conditions of confinement, health care, accessibility, use of force, and segregation.
- Individual, on-site interviews (voluntary and confidential) conducted with individuals 50 years of age and older in federal custody, as well as with CSC staff. Interviews were conducted between March 2018 and June 2018. This series of interviews spanned all five CSC regions at nine separate institutions. Interviews included individuals classified as minimum, medium and maximum security:
 - Ontario: Bath Institution, Grand Valley Institution for Women
 - Pacific: Pacific Institution/Regional Treatment Centre, Mission Institution
 - Prairie : Bowden Institution, Pê Sâkâstêw Centre (Indigenous Healing Lodge)
 - Atlantic: Dorchester Penitentiary
 - Quebec: Joliette Institution for Women, Federal Training Centre.

- On-site interviews were conducted with men and women who have been released to the following (non-CSC run) community-based residential facilities (CBRFs), as well as some of the staff:⁴
 - Haley House (Peterborough, Ontario)
 - Maison St-Léonard Community Residential Facility and Service Oxygène Satellite Apartments (Montreal, Quebec)
 - Kirkpatrick House (Ottawa, Ontario)
 - Thérèse-Casgrain Halfway House (Montreal, Quebec)
 - Community Residential Center of the Outaouais (Gatineau, Quebec)

- In total, individual interviews were conducted with:
 - 250 older individuals incarcerated in a federal penitentiary (men: 210 and women: 40).
 - 18 inmate caregivers who provide support to older individuals in federal custody.
 - 12 older individuals released to the community residing in a CBRF (men: 6 and women: 6).
 - 41 CSC staff members (Wardens, Assistant Warden Interventions, Chiefs of Health Care, nurses, correctional officers, parole officers, correctional managers).
 - 14 CBRF staff.

- A review and assessment of CSC research, policy, services and interventions.

- Consultations with other organizations/groups: St. Leonard’s Society of Canada; Dementia Justice Canada; the Parole Board of Canada; Executive Director at St. Leonard’s House Windsor (Windsor, ON) and two retired CSC employees (Warden and Chaplain), who were part of establishing the psycho-geriatric unit at the Regional Treatment Centre in the Pacific region.

- A review of publicly available policies and practices associated with how correctional authorities in other countries manage their older prison population.

⁴ The responses from the community groups may not be generalized as the sample included only CBRFs in two of the five regions.

In addition, information was requested from international correctional authorities and responses were received from the United Kingdom, Finland, Norway, Australia and New Zealand.

Background

*Profile of Older Individuals in Federal Custody*⁵

According to the most recent 2018 data, 25.2% of the federally incarcerated population is 50 years of age and over (20.2% are aged 50-64; 4.1% are aged 65-74; and 0.9% are 75 years of age and older).⁶ By comparison, nearly 4 in 10 Canadians are 50 years of age and older and 16.1% of the Canadian population is 65 and over.⁷ As of November 2018, the oldest male in federal custody is 87 years old, and the oldest female is 79. The average age of federal offenders (including those incarcerated and released to the community) has been gradually increasing and is now 40 years.⁸

CSC states that growth rates for those 50 years of age and older (including those 65+) have been linear and constant (and perhaps even predictable) for the past 5 years, and that their representation in custody is not as high as the general Canadian population.⁹ While both statements are technically true, it is the growing concentration of older individuals in federal custody—being housed in facilities that were not designed to hold them in the first place—that makes this an area of increasing attention and concern, one that underscores the unmet needs of a largely hidden and neglected population.

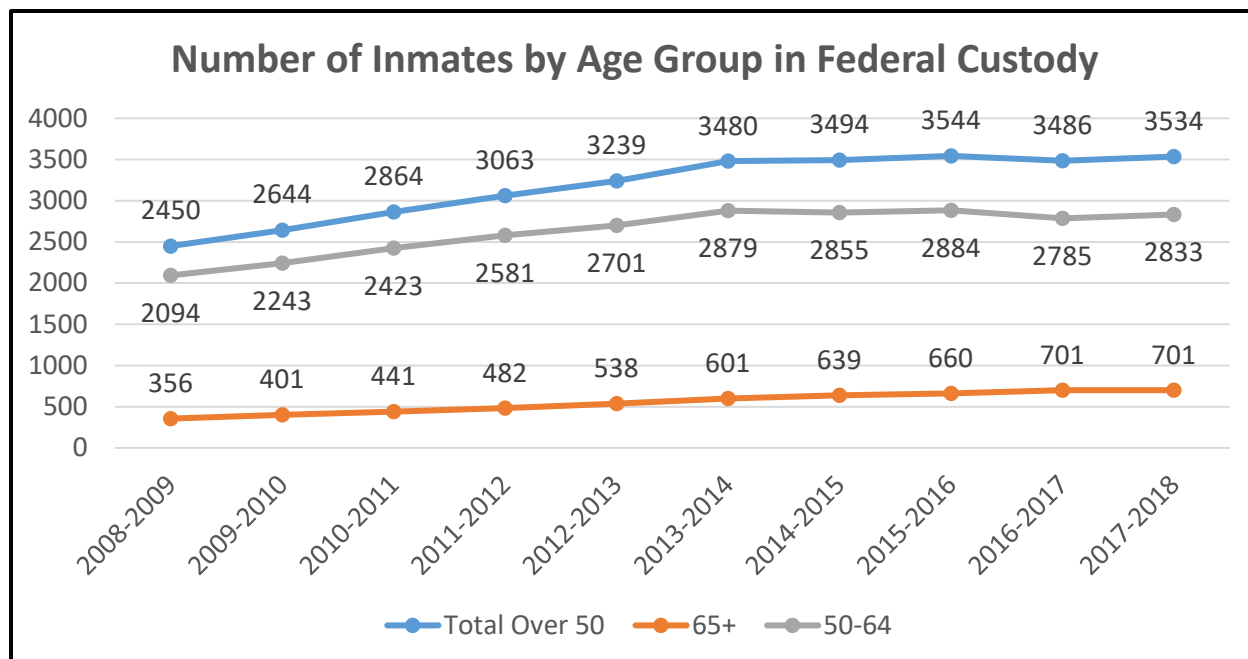
⁵ See Annex A for detailed statistical tables and graphs.

⁶ CSC Data Warehouse. (Jul. 2018).

⁷ Statistics Canada. Table 17-10-0005-01 - Population estimates on July 1st, by age and sex.

⁸ CSC. (Apr. 2018).

⁹ CSC. (May 2018).



Source: CSC Data Warehouse. (June 2018).

Aside from larger demographic trends in Canadian society, there are some unique factors driving the increase in older individuals in federal custody:

- One in four (26.4%) federal inmates is serving a life or indeterminate sentence. Half (50.3%) of individuals 50 years of age and older in federal custody are serving a life sentence.¹⁰ Some long-serving inmates have been incarcerated for three, four or even five decades. The accumulation of ‘lifers’ creates a stacking effect over time. Many inmates have become elderly or even geriatric or palliative behind bars.
- Individuals in federal custody age 50 and older are more likely to be serving a longer than average sentence (more than 6 years for those with a determinate sentence).¹¹
- More individuals are being sentenced later in life. Convictions for historic offences (often sexual offences) have also impacted on the age at admission.

¹⁰ CSC Data Warehouse. (Oct. 2018).

¹¹ CSC Data Warehouse. (June 2018).

Since 2000–01,¹² the proportion of federally sentenced offenders 50 years of age and older admitted on a warrant of committal (where it was their first federal sentence) has doubled—increasing from 8.2% to 16.4% in 2017–18.¹³

- Since 2005, the number of offences with mandatory minimum penalties increased considerably.¹⁴

Among the total population of individuals in federal custody 50 years of age and older, there are three main sub-groups capturing the majority of older offenders:¹⁵

1. Long-term first-time offenders (defined as those with a first conviction that occurred prior to 50 years of age, who are serving sentences of 10+ years). This group is aging or growing old behind bars primarily as a result of a long or indeterminate sentence. They represent 24% of the older prison population.
2. Those convicted later in life (defined as those with a first conviction after 50 years of age). This group comprises approximately 28% of the older population.
3. Recidivists who often spend many years moving in and out of incarceration (defined as those who previously served at least one federal sentence). This group represents 45% of the older population.

In 2017–18, when compared to younger individuals (< 50) in federal custody, older individuals (50+) were *more likely* to:

- Be serving a longer or indeterminate sentence;
- Be convicted of a sexual offence;
- Be classified as minimum security;
- Have a high level of risk;
- Be deemed a dangerous offender; and,
- Be admitted to segregation for their own safety.

¹² All references to a year-long period are referring to the fiscal year.

¹³ CSC Data Warehouse. (June 2018).

¹⁴ These new laws laid out new or more severe minimum penalties for drug offences, impaired driving, firearms offences, and sexual offences involving children including child pornography.

¹⁵ CSC. (Apr. 2014).

Over the past decade, the number of federally sentenced women 50 years of age and older has nearly doubled—from 56 in 2007–08, to 102 in 2017–18. The most recent 2018 data shows that 89 of the women in federal custody are between the ages of 50 and 64. This represents 13.5% of all women in federal custody. 13 women (2%) are 65+ years of age.

Similarly, over the past decade, the number of Indigenous individuals in federal custody 50 years of age and older has also increased. The number of older Indigenous persons has more than doubled—from 265 individuals in 2007–08, to 632 in 2017–18. (Ages 50-64: 534 or 13.9%; age 65 and older: 98 or 2.5%). The number of Indigenous individuals 50 years of age and older has increased every year since 2007–08.

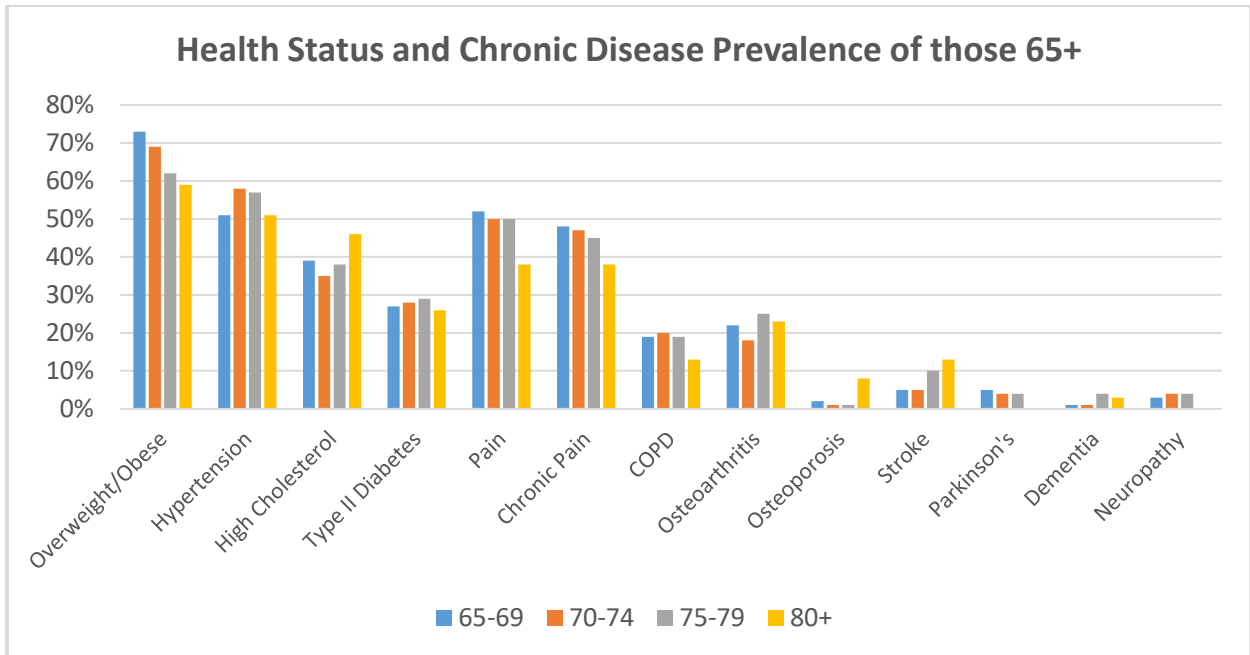
The supervised population in the community is also aging (i.e. those in halfway houses or community correctional centres, on parole, statutory release or a long-term supervision order, etc.) Between 2008–09 and 2017–18, the community population 65+ more than doubled—from 544 offenders in 2008–09, to 1,119 in 2017-18. In 2017–18, nearly two-thirds (63.5%) of those 50 years of age and older released to the community were on full parole; another 17% were on Statutory Release; 13.4% were on day parole; and 6% were released on a long-term supervision order.

*Health Profile*¹⁶

CSC recently reviewed the prevalence of chronic health disease of all offenders 65+ identified from the Offender Management System (October 2, 2107).¹⁷ This included an examination of the records of 721 adults 65+ in federal institutions. Overall, preliminary findings suggest that the prevalence of chronic disease among individuals 65+ in federal custody is generally higher than that of the general Canadian population (age 65+). The most prevalent chronic diseases among offenders 65+ appear to be obesity, hypertension, high cholesterol, type II diabetes and chronic pain.

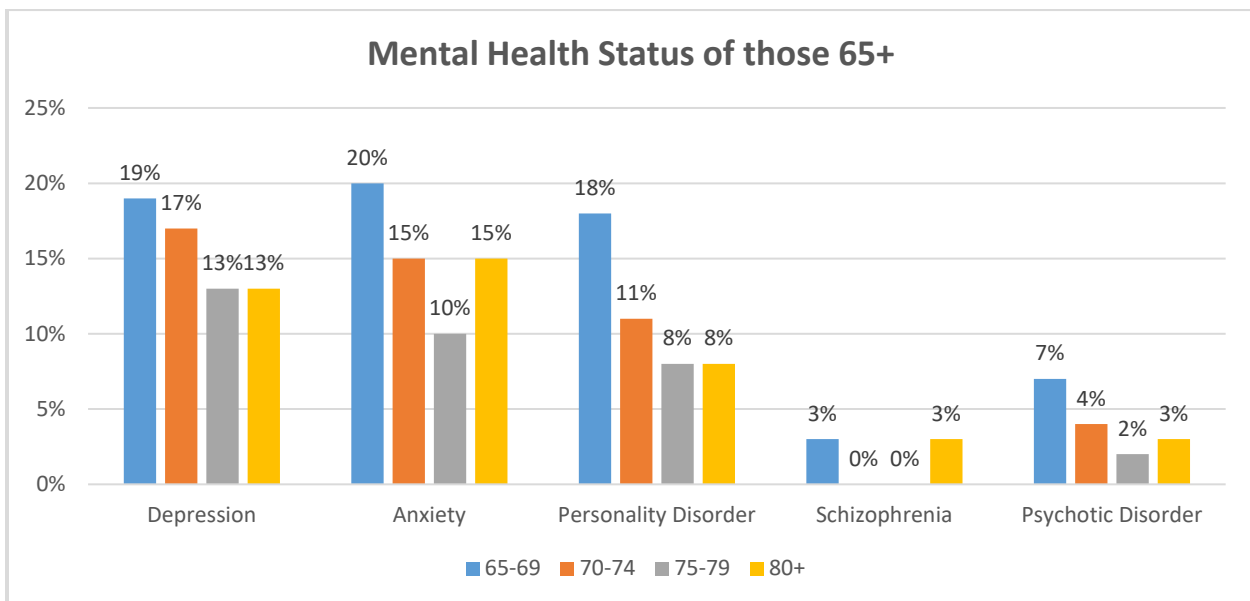
¹⁶ It should be noted that the analysis on health profile pertains only to offenders 65+. Data is not currently available for those 50-64 years of age. CSC will also be conducting an examination of the chronic health conditions on a sample of those 50-64 years of age in federal penitentiaries.

¹⁷ CSC. (May 2018).



Source: CSC. (Nov. 7, 2017). Preliminary Review: Health Conditions of Older Adults 65+ within CSC. *Draft PowerPoint Presentation.*

In terms of mental health profile, individuals 65+ in federal custody appear to have high rates of depression, anxiety and personality disorder.



Source: CSC. (Nov. 7, 2017). Preliminary Review: Health Conditions of Older Adults 65+ within CSC. *Draft PowerPoint Presentation.*

The CSC review also found that 112 offenders age 65+ have a current cancer diagnosis (e.g. prostate, gastro, skin, lung, bladder, kidney, lymphoma, etc.). Medications are most frequently prescribed for those 65+ for hypertension, cholesterol, anticoagulant, gastroesophageal reflux disease, antidepressants and diabetes. Not surprisingly, many individuals 65+ in federal custody are being prescribed multiple medications.

Little Progress to Date

The growing number of older people under federal sentence is not a new issue for Canada. CSC completed its first comprehensive review of this issue in 2000. At that time, 13% of the inmate population was 50 years or older. Issues identified then included rising health care costs, specialized care, assistance in daily routines, palliative and chronic care and community release strategies for older offenders. An Older Offender Division was created at CSC National Headquarters with a specific mandate to address these issues.¹⁸

The Office first raised the issue of older offenders in its 2005–06 Annual Report. The Office’s 2010–11 Annual Report examined the issue in more depth (at that time the in-custody offender population of 50 years or older was just under 20%), highlighting the challenges and vulnerabilities facing this group and recommended that CSC develop a more appropriate range of programming and activities, hire more staff with training and expertise in gerontology and implement a national older offender strategy. The Office has updated and repeated these concerns and recommendations in successive Annual Reports.

In terms of legislation and policy, the *Corrections and Conditional Release Act (CCRA)* and *Regulations (CCRR)* do not explicitly specify age (or being older) as one of the factors to consider in correctional programming, policies or decision-making. Section 4(g) of the *CCRA*, however, states that “Correctional policies, programs and practices respect gender, ethnic, cultural and linguistic differences and are responsive to the special needs of women, aboriginal peoples [sic], persons requiring mental health care and *other groups*” [emphasis added]. CSC has instituted a number of measures in

¹⁸ This unit was subsequently disbanded and never replaced, despite continued and consistent growth in the aging population.

response to the growing number of older individuals and issues of accessibility more broadly in federal custody including:

- allocating ranges dedicated primarily to older individuals;
- developing an Assisted Living Unit at Bowden Institution and a psycho-geriatric unit at Pacific Regional Treatment Centre;
- reviewing the prevalence of chronic diseases among older inmates;
- creating a caregiver program at some institutions;
- retro-fitting institutions (e.g. ramps, accessible washrooms); and,
- conducting research to examine the older offender population.



Psycho-geriatric unit- Pacific Regional Treatment Centre

While both the Office and the Commission acknowledge that these local and regional measures are a good start, they fall significantly short in several ways. First, these CSC measures are not nationally integrated. Second, they are impeded by a lack of acknowledgement in policy and practice that older individuals constitute a vulnerable group in corrections who require specially adapted or tailored services and interventions. As well, there are no national policy directives or guidance specific to the care and management of older individuals in federal custody. Moreover, until recently,

CSC has made little attempt to assess or recognize the needs of older individuals in federal custody as separate or distinct from the rest of the offender population.

In fact, until just recently, CSC maintained that its current measures—premised on an assessment of an individual’s ability to perform basic daily living activities—are adequate to address the needs of *all* offenders, even older individuals.

This past year, following repeated recommendations by the Office for a National Older Offender Strategy, including the Office’s 2015–16 Annual Report, CSC finally agreed to develop a framework that addresses the care and custody needs of older offenders. This initiative, which the Service committed to implement by March 31, 2018, is still in draft form and has not been released publicly.

Delivery on this commitment, which in draft documents is framed as “promoting wellness and independence of older persons within CSC” is underway. It involves extensive stakeholder, expert and offender consultations in several areas of service delivery. As part of this investigation, the Office received and reviewed a draft (May 2018) CSC document entitled, “*Promoting Wellness and Independence of Older Persons in CSC Custody: A Policy Framework.*” As described in that document, CSC’s approach to older individuals in federal custody is to support them in remaining functionally independent as long as possible, and to allow them to “age in place.”

While the framework and initiatives proposed in it will certainly better assess and identify gaps and needs within the older offender population, as well as improve internal processes and the situation of many older offenders, the Office and the Commission believe the proposed framework is too narrow, and does not go far enough. Nearly all of the proposed initiatives, while important and required, are focused on helping older individuals better function within the prison walls. There is virtually no mention of using the findings from the cognitive and functional assessments recently conducted by CSC on individuals 65+ to determine if a placement in the community might be more appropriate. While CSC describes initiatives to connect older individuals leaving prison with community services, there is still no practice to assess whether older individuals within prison, including those with health deterioration, could be placed in more appropriate facilities in the community. In other words, CSC’s proposed plan seems to leave older individuals in federal custody to effectively “age in place,” within

the existing prison environments and infrastructures. CSC's proposed approach is to offer more tailored interventions only as an individual's functionality (and independence) progressively deteriorates over time. Keeping inmates who are in declining health in prisons, which need to be retrofitted with specialized equipment and resources (e.g. lifts, hospital beds, medical specialists), could entail significant costs.

Some of the older offenders that the Office and the Commission interviewed for this investigation are mobility impaired (wheelchair user), and have difficulty communicating as result of advanced dementia/Alzheimer's disease and/or declining motor skills. Some of them are not aware of their surroundings or why they are even in prison. Surely, some of these individuals would be better served in a community facility designed and adapted to meet their needs. A community placement would not only be significantly less costly, but would undoubtedly provide more dignity and better care.

Many individuals who have experienced advanced health-decline have spent several years behind bars and some are now chronically or terminally ill. The risk that some of these individuals present to society seems negligible. The resources that CSC is spending to keep this segment of the population behind bars could be better used to fund alternatives in community long-term care facilities. CSC's proposed "aging in place" approach does not seem to adequately consider alternatives to incarceration that may offer more dignified, less costly and safer alternatives to unnecessary incarceration.

An important final note

The older population in federal custody is a very diverse group of individuals with different characteristics, needs, challenges and experiences. The information gathered in this joint investigation affirms that older offenders frequently experience adverse impacts, barriers and challenges that result from more than one ground of discrimination. This is referred to as **intersectional discrimination**. It produces unique and, at times, compounded disadvantage that is different from the discrimination that can result solely from age.

In particular, while age and disability are separate concepts, they intersect uniquely in this sub-population. For example, while not all age-related limitations may be considered disabilities, they can result in functional impairments and their progress and

impacts may be heightened in the prison environment. As noted, this investigation gathered some information regarding the differences between older offenders based on disability and sex, however, it is clear that characteristics relating to other prohibited grounds in the *Canadian Human Rights Act*, including “gender identity or expression,” “race,” or “national or ethnic origin” (both which frequently are identified as relating to Indigeneity) are other important considerations in this group of offenders.

The findings of this investigation suggest that there is a need to more closely examine and consider the intersectional characteristics and needs of offenders. Together, the Office and the Commission urge CSC to do so in its development of a National Older Offender Strategy. CSC has an obligation to recognize, respect and be responsive to the diversity within this sub-population of individuals within the correctional system.

Finding 1: Some older, long-serving offenders are being warehoused behind bars

“The purposes of a sentence of imprisonment or similar measures deprivative of a person’s liberty are primarily to protect society against crime and to reduce recidivism. Those purposes can be achieved only if the period of imprisonment is used to ensure, so far as possible, the reintegration of such person into society upon release so that they can lead a law-abiding and self-supporting life.” (Rule 4: *United Nations Standard Minimum Rules for the Treatment of Prisoners* (the Nelson Mandela Rules))

In our interviews with older individuals in federal custody, it was surprising to learn that some individuals have been behind bars for three, four, or five decades. Many are years or even decades past their parole eligibility dates.¹⁹ It bears remembering that a life sentence in Canada for first degree murder is 25 years before parole eligibility, though many serve longer than 25 years before being granted parole. Some are never released.

A survey released in September 2017, indicated that in terms of statutory life sentences from 98 countries, the average minimum period was 18.3 years (the median was 18 years and the mode was 15 years). 29 countries (30%) set their minimum period at 25 years or more, a category that includes Canada. The minimum period was 15 years or less for nearly half of the sample.²⁰ In other words, in terms of sentence length, Canada’s minimum life terms rank on the high end in terms of international comparisons.

In every case where a life sentence is imposed, it is important to understand that parole eligibility does not necessarily mean *release*. Even if paroled, a ‘lifer’, with an indeterminate sentence remains under sentence until death. In all instances, a life sentence in Canada is for life, even if that person is eventually released and supervised in the community.

¹⁹ Though some were long past parole eligibility dates, this does not mean that they did not appear before the Parole Board for a parole hearing. They may have appeared several times and been denied, chosen to waive their parole hearing or have had their parole revoked with or without a new offence.

²⁰ Appleton, C., & van Zyl Smit, D. (Sep. 2017).

Today, there are more than 3,600 individuals (or 26.4%) in federal custody with a life sentence.²¹ Though the number of new admissions to federal custody with a



life/indeterminate sentence has remained relatively stable over the past decade, the accumulation of ‘lifers’ over time creates a stacking effect. In other words, many individuals in federal custody age and become elderly or even palliative behind bars as they serve their sentence. Over the past ten years, life-sentenced offenders constituted less than 4% of all persons admitted to federal prison each year, but collectively they now represent one quarter of the total inmate population.²²

Among individuals in federal custody 50 years of age and older, half (50.3%) are serving an indeterminate sentence. Four in ten federally sentenced women 50 years of age and older, and nearly six in ten (58%) Indigenous individuals 50 years of age and older are serving indeterminate (life) sentences.²³

Based on sentence length or time-served to date, there are a number of individuals who have aged behind bars. In many cases, long periods of incarceration may no longer meet the purpose or original intent of the sentence and may not be necessary from a public safety perspective. In addition, long periods of incarceration may, in some cases, be inconsistent with respect to human dignity.

²¹ CSC Data Warehouse. (Feb. 2017).

²² *Ibid.*

²³ CSC Data Warehouse. (Oct. 2018).

Consecutive life sentencing legislation passed December 2011 in Canada,²⁴ means that some offenders will spend the rest of their natural life behind bars. For the first time in Canada, this legislation imposes a living death sentence with no actual prospect of release. The age-related adverse consequences of these legislative provisions are significant and need to be considered.

Long-Serving Older Inmates*

Currently, in Canadian federal penitentiaries, there are 316 inmates 50 years of age and older who are on their first federal sentence, have not yet been released and have spent 20 years or more behind bars; 199 have been inside for 25 years or more, 125 have been in for 30 years or more and 24 for 40 years or more. Approximately 12% of those age 50+ who have spent 20 years or more in prison have a 'dangerous offender' designation.

When individuals on their second or greater federal sentence are considered, just shy of 600 individuals 50 years of age and older have spent (though not consecutively) 20 years or more in federal prisons, 325 have spent 30 years or more and 107 have been imprisoned for 40 or more years.**

* Data extracted from CSC Data Warehouse, May 2018.

** Many of the individuals who have consecutively accumulated 20 years or more in prison may have spent significant periods of time in the community under supervision before going back to prison. This analysis counts only time spent in a federal institution. Many individuals will have accumulated prison time in provincial jails as well, which is not counted here.

²⁴ On December 2, 2011, the *Protecting Canadians by Ending Multiple Murders Act* was enacted which allows judges to impose consecutive 25-year parole ineligibility periods.

After spending long periods behind bars, many of these individuals have very little to show for it in terms of reintegration. Other than working, many reported engaging in very few meaningful or purposeful activities since they long ago completed any required correctional programming or upgraded their education. For those who are not working, they described their days as long, lonely and boring. Many reported watching television and/or sleeping during the day. Social programming activities (e.g. library, hobby shop, gym, card room, poolroom) are usually

Social Isolation

Isolation and monotony are amplified for those with serious mobility/health issues. One individual who was quite elderly and had cognitive and mobility challenges (he was in a wheelchair and was starting to show signs of dementia) reported that his day consisted of being wheeled out into the common area in the morning where he was left at a table by himself (unless someone came to visit him at the table), returning to his cell at lunch time, attending the library to read the newspaper for two hours each day and then returning to his cell for the remainder of the day to sit in his wheelchair or lay in his bed. He attends mass every Sunday and has a visit from the Chaplain once a week.

closed during working hours to facilitate institutional routines and work schedules. One inmate, age 58, told us: "During the day, we just mill around. Many guys do nothing here; for them, they are just existing."

Many reported that they rarely meet with their institutional parole officer. Little, if any, substance remained on their correctional plan. Though past retirement age, many choose to continue working only because the alternative is being locked up or isolated in their cells.

Spending long periods behind bars can contribute to eroding ties and bonds with family and friends, factors which are important and can assist in community reintegration. Some inmates told us they have lost contact with their family and friends after spending many years or even decades behind bars. They may have passed away, cannot afford to visit, find it too difficult to visit because of their own health or the distance to be travelled, or are no longer interested in maintaining ties.

One inmate, age 78, told us that CSC has “...no strategy for lifers — I finished my programming in the first two years and now I am doing nothing.” Another inmate, age 77, said: “I am sick and tired of doing time. I have no information and no answers about what I’m supposed to do. My parole officer doesn’t know. I want to get out of here and move on.” Another inmate, age 66, reported: “I have no understanding of what CSC expects from me to reduce risk ... If you are quiet, you are put on the back burner and forgotten about.”

The impact of constantly changing parole officers on a ‘lifer’

In December 2014, Bill C-483, *An Act to Amend the Corrections and Conditional Release Act (CCRA) (Escorted Temporary Absence)* amended the CCRA to limit the authority of the institutional head to authorize the escorted temporary absences (ETA) of an offender convicted of first or second degree murder. It requires that ETAs for such offenders instead be authorized by the Parole Board of Canada (PBC).

During interviews, a ‘lifer’ who has been incarcerated for 36 years told us about how he had been approved for many ETAs, however when Bill C-483 came into effect, he was required to go before the PBC in order to be approved to continue participating in ETAs. But in order to get a hearing, his correctional plan had to be updated. And in order to do that, he required a psychological assessment. After changing parole officers several times (he reported he had 8 different parole officers over a period of five years), it took him a year and a half to get a psychological assessment and a further two years for yet another parole officer to update his correctional plan. However, by the time his Correctional Plan had been updated, his psychological assessment had expired (it is only valid for 2 years). He has now waited three and half years to resume his ETAs. Given the importance of ETAs in demonstrating reintegration potential, this is unacceptable.

Many reported having several parole officers over a number of years (i.e. one reported 14 different parole officers over 10 years; another 6 over 2 years). In CSC policy, a security classification review is supposed to be completed at least once every two years for inmates classified as maximum or medium security. It is difficult to comply with this policy when an individual is consistently assigned to a new parole officer who must spend time getting to know their new clients before recommending them for a lower security classification, programming, or escorted temporary absences (ETA) /unescorted temporary absences (UTA). Those who have spent many years behind bars would seem to require additional and consistent support, programming, services, ETA/UTAs or work releases to help them safely reintegrate.

Not surprisingly, many of the older individuals in federal custody we interviewed told us they felt that they have become ‘institutionalized’ and that it would be very difficult returning to the community. As one long-serving inmate put it: “I’m institutionalized. I’m bitter and I have been screwed over by the system so badly, I’ll never function on the outside.” He is 68 years old. Another individual, age 55, told us: “It’s mental — you’re told to do everything in prison, you’re out of touch with the world.”

Many of them appear angry and bitter, telling us that “...the system is broken.” Some feel that they have been ‘forgotten’ about or perhaps “put to the bottom of the pile” because they no longer complain and are not involved in institutional incidents or make much of a fuss about anything.

Many expressed very little interest in continuing to “fight” the system. Few bother to put in requests, complaints or ask to meet with their parole officer because “... there is just no point.” For these

men, there seems to be very little incentive to continue to progress toward eventual release. There is a sense that they have been overlooked or abandoned. Many of those interviewed have significant mobility issues or serious chronic illnesses and could likely be safely managed in the community.



On a final note, our investigation suggests that older individuals (particularly those who have been in the system for extended periods) face stigma and stereotyping resulting from unconscious or conscious beliefs that they cannot be rehabilitated or reintegrated —or that they are not worthy of the expenditures of resources to do so. While not necessary to demonstrate discrimination, stigma and stereotyping are indicators of discrimination. To the extent that stigma and stereotyping against this population are contributing factors to warehousing and institutionalization, they represent a systemic

and pervasive form of discrimination that requires CSC to take proactive measures. Attitudes and approaches to the management of older individuals in federal custody need to change.

What is Institutionalization?

In prison, an inmate's choices and decisions are narrowed resulting in a gradual habituation to the prison environment (Crawley, E., & Sparks, R., 2006). Over time, an inmate's life becomes highly routinized and predictable, and is gradually overtaken by institutional norms. Consequently, long-term incarceration can lead to a sort of "institutional dependency," or "institutionalization," defined as: "the incorporation of the norms of prison life into one's habits of thinking, feeling, and acting." (Haney, C., 2002) The effects of institutionalization seem to be greater for inmates who enter prison life at an earlier age.

Institutionalized inmates have been characterized by the following psychological adaptations:

- lack of interest in the outside world or in "starting afresh";
- anxiety about release;
- social alienation and withdrawal;
- hypervigilance, suspicion, and interpersonal distrust;
- diminished sense of self-worth and personal value;
- inability to make independent decisions;
- incorporation of exploitative norms of prison culture;
- dependence on institutional structures and contingencies; and
- Post-Traumatic stress reactions.

Recommendation 1:

We recommend that an independent a review of all older individuals in federal custody be conducted with the objective of determining whether a placement in the community, a long-term care facility or a hospice would be more appropriate.

Finding 2: Failure to recognize and protect a vulnerable population

CSC is failing to recognize older individuals in federal custody as a vulnerable population within the prison population. As a result, their health, safety and dignity are not being adequately protected. These omissions show up in simple, everyday living and broader systemic issues.

For example:

- Older inmates, some of whom are past retirement age, are still expected, required or compelled to work only out of fear of the alternative—being isolated, locked up, or at risk of being put on a reduced allowance.
- Older inmates voluntarily request to be placed in segregation more frequently and most commonly out of fear for their personal safety.
- Some use of force incidents and physical restraint methods (e.g. wristlocks and ankle shackles) involving older inmates seem disproportionate and not appropriately adjusted for use on older individuals and the risk they present.
- The incidence of bullying, victimization, intimidation and assaults on older inmates appears commonplace. Incidents went largely unreported and were therefore rarely investigated or addressed.
- There is a need for reasonable access to dignity aids and comfort items for older inmates (e.g., medical mattresses, pillows, and orthopedic shoes).



Death of an Older Individual during an Extended Lockdown

A medium security institution was locked down for nine days because of a search under section 53 of the *Corrections and Conditional Release Act*. During the lockdown, security staff received a 'kite' (anonymous note) indicating that an 83-year-old Metis inmate might harm himself and was refusing meals. He had refused solid food for six days without CSC staff noticing. As a result, the inmate was placed on a fifteen-minute watch for the rest of the night shift. The next morning, the officer in charge of the watch opened the cell door to speak with the inmate and found him to be pale, breathing heavy, refusing to eat and making comments about wanting to die. Following an assessment by a nurse, the inmate was to be moved to the Regional Treatment Centre, however while being escorted to the van, officers decided it was not safe to transport him given his health condition. While trying to remove him from the van, the inmate went limp. Initial first aid was provided, including the AED and 911 was called shortly after and the inmate was transported to the hospital. He died in hospital two days later.

Lengthy lockdowns are tantamount to placement in segregation with limited to no movement, fresh air or human contact. This lockdown was particularly difficult as it occurred during a heat wave exacerbating the already difficult conditions of confinement. It is essential that vulnerable populations (i.e. older offenders, those with mental and/or physical health issues) are monitored daily during lockdowns by professional health care staff.

Personal Safety

Though some older individuals in federal custody reported feeling safe in their environment (primarily those in minimum security institutions), many others reported having experienced bullying or muscling from younger inmates for canteen items or medications. This was overwhelmingly reported in men's institutions. Some feel so vulnerable that they rarely leave their cell or range, and some do so only if they absolutely have to. They feel especially vulnerable in common areas such as the cafeteria and yard where they report incidents of muscling for a chair or their food. "What am I going to do when a younger guy cuts in front me? I just don't say anything."

During another interview, an elderly man was noticed by the investigator to be pacing back and forth on the range. The interviewee told the investigator that this older man is too afraid to leave the range and pacing was how he got a bit of exercise during the day. Others reported incidents where they have been physically assaulted, pushed around or beaten up resulting in various types of injuries though few were willing to provide details. Most of these incidents are not reported or investigated by CSC staff.

Canteen Access and Older Individuals

The Office recently received a letter/petition signed by ten older inmates, ranging in age from 62 to 76, identifying issues in terms of access to canteen. In their letter, they stated the following:

“We have basically two options; we can go to the canteen on payday and stand in line for up to two hours, and *maybe* get through the line to make our purchases, or we can wait a couple of days until we know the line will be smaller – only to find that half the items have been sold out.”

“Another issue is the increased vulnerability of older offenders to pressure or outright force from other offenders (usually gang members) to give up their canteen items, or to buy items to order. I am 68 years old, and I weigh 135 pounds; faced with this kind of pressure from younger, more fit and aggressive offenders, I don’t have too many options. Personally, I have encountered this kind of pressure four times, all in the past three months, with amounts ranging from a dollar or less up to \$36.00 (which represents more than a week’s take home pay).”

The letter goes on to make two recommendations: establish a time for older offenders to purchase canteen items and allow older offenders the option to order a bag canteen. This seems like a reasonable compromise, however the institution has denied their requests. Just one institution visited for this investigation (Regional Treatment Centre, Pacific Institution) had set aside a designated time for older offenders to access canteen.

In 2017–18, 13% of victims of inmate-on-inmate assaults²⁵ were 50 years of age and older.²⁶ This proportion has risen over the past 5 years (10.8% in 2013–14; 8.6% in 2014–15; 10.5% in 2015–16; 11% in 2016–17).

In 2017–18, of all admissions to segregation for personal safety reasons, including the nature of their offence, 10.2 % involved individuals who were 50 years of age or older. Of those who were over 50 years of age and were admitted to segregation for personal safety reasons, 11 % involved an individual 65 years of age or older and another 89% involved an individual 50-64 years of age. Most older individuals interviewed agreed that they should at least have the option of being housed together.

²⁵ Most inmate-on-inmate assaults involved male individuals. Individuals over the age of 50 were the instigator of an assault in 3% of incidents in 2017-18.

²⁶ CSC Data Warehouse. (June 2018).

They also felt that careful consideration should be given when younger inmates are integrated into an older population.

Providing older individuals with the option to access canteen and the gym during designated times would provide those who feel vulnerable with a greater level of personal safety and dignity.

Use of Force Involving Inmates 50 years of Age and Older

Prisons often operate with a security-first approach, even for the older population who tend to be more acquiescent and compliant within the institution. The Office reviews all use of force incidents occurring in CSC facilities. The Office recently conducted a pilot project to code all use of force incidents using a variety of indicators. Between October 2016 and October 2017, 1,349 use of force incidents were coded. Of the 1,349 incidents, 124 (9.1%) involved at least one male offender 50 years of age and older.²⁷ Of those incidents involving an aging offender:

- The largest proportion of use of force incidents occurred at the Ontario Regional Treatment Centre – Millhaven (16 incidents or 13%), followed by Mountain Institution (9 incidents or 7%) and Edmonton Institution (8 incidents or 6.4%).
- Most occurred in a medium security institution (60.4%) versus 33.8% in maximum security and 4.8% in minimum security.
- Nearly one-third (27.4%) occurred in a cell, another 24% on the range and 18% in a common area.
- 64.5% involved physical handling to gain control, 43% involved restraint equipment and 40% involved the use of OC (inflammatory) spray (an additional 9% involved displaying or pointing of an inflammatory agent).
- 20% of use of force incidents resulted in response to an assault between inmates.

²⁷ There were no use of force incidents coded during this time period that involved federally sentenced women 50 years of age and older.

These findings highlight the involvement of older individuals in use of force interventions and the high proportion of incidents that involve physical handling. Currently, CSC does not specifically consider an inmate's age (or related capacity and ability) in its intervention and response model.

CSC also provides limited training with respect to age-related health issues, including dementia or behaviours that might arise from an age-related health condition. A security-based response to a situation arising from an individual displaying signs of aggression who also has dementia would not be appropriate or effective. Training and changes to the use of force policy are required to ensure these situations are managed appropriately.



See Case 5 in textbox below: Use of pepper spray on a 71-year-old male who attempted to hit guards with his cane through the barrier.

Use of Force Incidents Involving Older Individuals

1. A 62-year-old inmate who has mental health concerns and uses a cane was physically resisting returning to his cell and was clinging to a doorframe while supporting himself with his cane. One correctional officer took the cane away while the other forcefully pushed the inmate into his cell. The intervention took place with no attempt to negotiate despite the fact that force was not urgently required as there were four officers present, the inmate was not aggressive and posed no threat to others.
2. A 71-year-old inmate who uses a walker was waiting at the gate, seated on his walker, to go to Health Services. When the gate opened to let a staff member through, the inmate got up and tried to cross the gate. He then exchanged a few words with the officer at the post and briefly lifted his walker in an intimidating manner before setting it down again. The officer then pepper sprayed the inmate who withdrew behind the gate where he briefly sat down on his walker before returning to his unit.
3. A 69-year-old inmate, with identified mental health concerns, did not want to return to his cell for count. The officer approached the inmate, punched him in the chest and grabbed him by his coat collar. There was no sign that the officer attempted to defuse the situation or avoid using force. This use of force was deemed non-compliant by both the institution and regional authorities. This inmate was involved in six use of force incidents over the period of the OCI's coding project.
4. A 52-year-old inmate residing in the psycho-geriatric unit because of a brain disorder was trying to assist a fellow patient in getting a new video game system running. A number of patients were trying to help when the owner of the game system became very frustrated that it would not work. At this point security staff stepped in and asked the inmate with the brain disorder to step away, which he did. Security staff then came over and yelled at him to lock up and he questioned them as to why he needed to lock up. Though he was not aggressive, he was immediately pepper sprayed by security staff. It appears little consideration was given to his cognitive deficits or to alternative ways to diffuse the situation.
5. A 71-year-old inmate at a maximum security institution was causing tension with other inmates in the common area. Correctional Officers attempted to intervene and directed the older offender to return to his cell. The inmate began swinging his cane at officers standing behind the unit barrier. OC spray was deployed and the inmate returned to his cell and was later placed in segregation.

Feeling Forced to Continue Working

In Canada, 65 years of age is the point at which people are eligible for Canada Pension benefits (a reduced pension is available at age 60) and Old Age Security.²⁸ In prison, while “retirement” from work is possible, it is not advisable as there is very little to occupy an offender’s time during the day. Some older individuals in federal custody came into the system very late in their life and have worked a full career in the community or were already retired prior to coming into the system. Nonetheless, they are encouraged to go back to work once in prison.

Most of those interviewed discussed the meagre wages that they earn while working, and their inability to retire within the institution as a result. Many feel “forced” to continue to work just so they could buy themselves a few “treats” from the canteen or save some money for their release. Once an individual retires or is deemed unable to work within the prison, they are put on a basic allowance of just \$2.50/day²⁹ with limited social programming available to them during the day. For those incarcerated in a medium security institution, if they are not working, attending programming or school, they are locked up in their cells for most of the day.

One older individual (55 years of age) we spoke to is paralyzed from the arms down, with just 40% movement in one arm and full movement in the other arm. He experiences constant pain as a result. Nevertheless, he was told by institutional staff that he should work and that they would find something that he was capable of doing.

It is questionable whether requiring—either directly or indirectly—older individuals in federal custody to work is reasonable, or whether being engaged in work should be the only basis for older inmates to obtain a reasonable living allowance. If an older individual *wants* to work, then CSC needs to consider age-related employment accommodation. If an older individual cannot work, then appropriate activities, time outside their cell, and a reasonable living allowance should be available.

²⁸ Bill C-31, *An Act to Amend the Old Age Security Act*, came into effect January 1, 2011 which prevented inmates 65 or older who are serving two years or more in a federal institution from collecting a taxpayer-funded pension.

²⁹ Those receiving a basic allowance do not have room and board deducted but the cost for the telephone is deducted (See Commissioner’s Directive 860: *Offender’s Money*).

The Office raised the issue of inmate pay in its 2015–16 Annual Report, describing how inmate pay has not changed in nearly 40 years. Inmates are responsible for a greater proportion of the costs to keep themselves fed and cared for behind bars and earn very little once deductions are factored in. In its report, the Office recommended that the Minister of Public Safety initiate a review of the inmate pay system, but the results of this review have not been shared with the Office or been made public.

Recommendation 2:

We recommend that CSC develop a separate and distinct Commissioner’s Directive specific to older individuals, which ensures that their specific needs and interests are identified and met through the provision of effective and adapted programs, services and interventions.

Recommendation 3:

We recommend that CSC provide staff with training in age-related needs — physical, social and psychological — as well as training on how to identify, respond to and appropriately manage behaviour related to dementia.

Recommendation 4:

We recommend that CSC re-examine its use of force training and policy to incorporate best practices and lessons-learned regarding use of force on older individuals (including those using mobility devices).

Recommendation 5:

We recommend that CSC offer appropriate work options (including accommodated options) for older individuals who want to and can continue working. In addition, regardless of whether an older individual can work, CSC should provide a reasonable living allowance to meet personal needs.

Recommendation 6:

We recommend that vulnerable populations (older offenders and those with mental and/or physical health issues) be monitored daily during lockdowns by professional health care staff.

Finding 3: Prisons were never intended as facilities for older persons

“We try to make something new out of the old, and it’s not always easy.”
(CSC correctional officer).

Infrastructure and Accessibility

One of the buildings that investigators from the Office and the Commission visited had a lip on the entryway despite having a long ramp running to the entrance. Those coming to the interviews in a wheelchair had to be “jerked” up and over the lip by their caregiver. As one older individual put it: “wheelchair ramps are in enough locations, but steps and stairs prevail.”

Another individual reported: “Some guys are scared to take showers because there are no grab bars. I also have a scooter. Before the scooter, it was a struggle to get up hills. I was slower to report and that was sometimes a problem. Some of the guards don’t get age-related problems.” (Inmate, age 64)

Across Canada, CSC has 428 wheelchair accessible cells.³⁰ Of those, 52 are in women’s facilities, and 38 of them are transitional (e.g. health care beds, segregations cells). All told, it means that CSC has 390 *permanent* barrier-free cells. This represents 2.5% of all the cells across CSC, which is above the 2% requirement in the *Federal Correctional Facilities Accommodation Guidelines for CSC*.³¹ But accessible cells are just one piece of a larger issue.

³⁰ All cells that CSC categorizes as ‘accessible’ or ‘barrier-free’ meet wheelchair accessibility requirements.

³¹ Some institutions exceed the 2% whereas others are below.



Federal Training Centre – Accessible cell

Over the years, CSC has made many modifications to improve accessibility (e.g. elevators, lifts, bathrooms with raised toilets and handrails, accessible showers with a removable showerhead, ramps to buildings, poles in cells to assist individuals to pull themselves out of bed, front load washer/dryer).³² However, given the age, condition and infrastructure of many federal institutions, ensuring comprehensive accessibility will require significant additional investment.

During site visits to a number of institutions, it became clear to investigators that while some cells/rooms may be termed “wheelchair accessible” that did not mean that those using mobility devices could easily move around or fully participate within the institution. For example, investigators noted the following physical barriers and/or infrastructure limitations:

- cells occupied by individuals using a wheelchair where the wheelchair was not able to pass through the cell door;
- doors to buildings without an accessibility button;

³² A front load washer/dryer was seen at only one institution but would be considered a best practice in terms of accessibility.

- accessible shower stalls often have a lip making it difficult for those using a mobility device to safely access the shower;
- accessible showers without a seat, slip mat or a handheld shower mechanism (one individual fell in the shower while investigators were interviewing and remained there for 20 minutes as there was no emergency button in the shower);
- private family visiting units that are not accessible;
- uneven and broken walkways around the exterior of buildings;
- inclines into housing units and buildings that appeared quite steep;
- lips on entryways to buildings;
- cells without in-cell emergency call buttons;
- kitchen counters that are too high for wheelchair access; and
- health care units lacked wheelchair accessible washrooms and waiting areas requiring older offenders to line up outside regardless of weather conditions.



Winter conditions make outdoor prison grounds even more challenging for those using mobility devices. A few older individuals reported slipping and falling on icy patches and inclines while making their way to health services or the cafeteria. The long distances



between the living units and health services, the cafeteria or canteen also create barriers. One 61-year-old individual reported that in the canteen line: “I have to sit on the ground because my back is hurting and it is too far for me to walk.” Situations such as these cause significant mobility challenges for some older individuals. A few reported not going to at least one meal each day because it is just too difficult to get there.

Living Arrangements

In some prisons in the United States, some older offenders may be able to reside in age-specific units. However, there is continuing debate on the merits of this practice. While this model may facilitate the concentration of specialized healthcare services, research indicates that this is not always the case.³³ These units may also lead to isolation or separation from the general population with limited or restricted access to programs and services offered elsewhere in the institution.

³³ Thivierge-Rikard, R.V., & Thompson, M.S. (2007).

Outdated Infrastructure

One unit in a minimum security institution at 600 Montée St-Francois, in Quebec, houses inmates who are amputees (some are double-amputees), others who use oxygen tanks, have Parkinson's disease or severe diabetes. None of the cells has a safety alarm. Other than by calling out, inmates have no way to communicate if they are in need. The cells are so small that inmates who use wheelchairs must leave them outside. There is no common area so inmates spend the day in their wheelchairs in a narrow hallway with one peer helper moving between them. The building is over 51 years old with poor ventilation. Staff leave the door to the outside open to help with airflow, however as one older individual stated, "I freeze in the winter because the cold air comes straight out on me."



Federal Training Centre – range for older offenders

There are some good examples within CSC of institutions that are providing older offenders with an option to live primarily with others their own age. A number of the institutions visited during this investigation have grouped older individuals together on a particular range or within one or two houses. Many also have designated ranges or houses where they accommodate those who require additional care or have serious health or mobility issues. These houses/ranges are often one level (no stairs), have accessible bathrooms and cells/rooms and are located closer to Health Services (though some are more isolated from programs/services). Many of those interviewed who are living on a range or in a house with mostly older offenders reported that they are relatively satisfied with their accommodations. Many others want to move into such spaces. These experiences suggest that adapted living arrangements need to be expanded and improved upon in terms of accessibility.

Older women, in particular, reported not wanting to be housed with younger women: “Especially at our age, we’re not children anymore. I have life experience. I have needs. Young people don’t care. I’m not interested in listening to their rage or getting involved in their gossip.” Another woman told us: “We’ve raised our children. We do not want to raise more of them.” Then there were other older women who reported that younger inmates were ready and willing to assist them. This range of opinion highlights the need for choice in terms of age-integrated options.

While not common, double bunking (housing two inmates in a cell designed for one) was mentioned a few times by individuals we interviewed. A case was recently brought forward to the Office where a 73-year-old individual had fallen while climbing down from a top bunk in the night to use the bathroom and injured himself. After the Office inquired as to why the younger cellmate had not been assigned the top bunk, the response from the individual who fell was that he was the younger of the two as his cell mate was 84 years of age. At that time,



the Office had recommended that the institution consider age as a factor in the cell placement assessment process for double bunking. While this recommendation was accepted, it is noteworthy that neither Commissioner’s Directive 550: *Inmate Accommodation*, nor the *Double-Bunking Cell Placement Assessment – User Guide* refer to age as a consideration in determining double bunking assignments.

A Need for Wheelchair Accessible Vans

A number of older individuals reported instances of trying to get into the prison transport van, often while hand cuffed and shackled at the ankles. One individual reported “...crawling on my hands and knees to get into the van” with handcuffs and shackles (this inmate was dying of heart disease). There were several individuals who discussed difficulties entering and exiting the transport van not only because they are constricted by restraints but also because they have difficulty maneuvering their bodies to get into the small space without assistance. It can be even more challenging for

those using mobility devices as these are often taken away making it a struggle to get into the van. The Office has reported before on safety issues related to the transport vans and recommended that they be phased out.³⁴ Vehicles that can more appropriately accommodate those with mobility challenges should replace these less accessible vans.³⁵

One elderly woman (66 years of age) reported that she was not able to lift her leg high enough to get into a prison transport van so she asked a correctional officer if one of the cuffs could be removed so she could more easily steady herself. The request was denied. She continued to attempt to enter the van, lost her balance and tried to grab onto one of the correctional officers who stepped back, leaving her to fall to the ground.



³⁴ Office of the Correctional Investigator. (2017).

³⁵ CSC's draft policy framework (*Promoting Wellness and Independence Older Persons in Custody: A Policy Framework*) appears to recognize that transport vehicles should be capable of accommodating wheelchairs and those with disabilities, however at this point, there is only a commitment to "review the suitability of CSC transport vehicles" and the restraint policy for transportation of older persons and threat risk assessment based on the severity of a medical condition/disability.

Likewise, during these medically escorted temporary absences, it seems unnecessary to apply restraints to the legs or hands of an older person that are swollen, painful, easily bruised or cut. The risk of violence or escape that some of these individuals pose seems minimal and could be managed with few or no restraints. After leaving a hospital, one inmate, age 72, commented: “You have your feet in chains and you’re handcuffed. Attached like a sausage, I am sick, where do you want me to go? Plus, the red blanket and four straps on top with two correctional officers.”

Some small concessions would go a long way toward recognizing these concerns. For example, the use of restraints should be proportionate to the actual risk or ability posed by the older offender in the context of their health.³⁶ CSC has committed to “review the policy on restraint for transportation of older persons for medical care and the use of a threat risk assessment process based on the severity of medical conditions.”³⁷ The Office and the Commission are encouraged by this commitment.

Barriers to Respect and Dignity

In federal prisons, older individuals are expected to do the same things that a twenty-year-old must do, with few accommodations or exceptions to the rules. Some older individuals in federal custody reported being hurried along and not given extra time to move from one place to another, despite using a walker or a cane. Many reported problems with their feet (pain, swelling) or issues bending over to tie up their shoes. Several want wider shoes (to accommodate swollen feet) or shoes that had Velcro (they are easier to put on and take off). Only a very few were successful in obtaining these non-standard items and only did so after waiting an unreasonable amount of time. One individual (57 years of age) described a situation where his feet were so swollen that he could not fit into his institutional shoes, so he wore slippers instead. While he was afraid of falling using only slippers, he was more frustrated when he was institutionally charged for not wearing standard issued shoes.

In other instances, CSC policies and practices undermine the dignity of older offenders. For example, in one institution, visits by the doctor are limited to the medium security-side of the institution. This means that older offenders housed on the minimum

³⁶ Prison and Probation Ombudsman. (June 2017).

³⁷ CSC. (May 2018).

security-side are strip-searched before and after visiting the doctor. Some inmates told us this led them to avoid reporting medical problems that might require a doctor's care.

At times, institutional routines are also ill-adapted to meet the needs of persons who are elderly and who have disabilities. One older individual explained that because the last stand-up count is at 10 p.m., he has to try to stay awake so that he can get to his cell door, rather than going to bed early.

Other examples highlight the lack of common sense or the extreme inertia of the system in responding to needs within a reasonable period. At a minimum-security facility in Quebec, one individual with Parkinson's disease has been waiting to go to a halfway house for four years. He resides in a small cell where he is able to get out of bed by balancing between the desk and a pipe on the wall. He cannot go to the halfway house (which is not accessible) until he has knee surgery. He cannot have the knee surgery until he increases his strength. There is no physiotherapist in the institution so he receives no physical therapy. He does not have the strength to get up to use the bathroom at night alone so the peer helper puts incontinence pants on him for nighttime use. A hospital bed has been ordered, but he has been waiting a long time for it. This is unacceptable.

Recommendation 7:

We recommend that CSC designate facilities for older individuals who want to live in such areas—and that such facilities are designed or retrofitted to ensure physical accessibility.

Recommendation 8:

We recommend that CSC create dedicated spaces and times where older individuals can assemble and socialize during institutional working hours, and allow them access to communal prison services during working hours (e.g. library, gym, canteen, visitation, cafeteria, hobby shop and yard).

Recommendation 9:

We recommend that social programs staff organize age-appropriate and disability-appropriate leisure, wellness and recreational opportunities (e.g. stretching, walking, aerobics, yoga, card games).

Finding 4: As the number of inmates with chronic disease rises, so do correctional health care costs

CSC healthcare costs have fluctuated over the past 10 years from a low of \$201 million in 2008–09 to a high of \$267 million in 2012–13.³⁸ While healthcare costs are impacted by many factors, the aging offender population is no doubt an important driver of rising costs. CSC does not currently track healthcare costs by age, so it is not known how much is spent per capita on health care for an older person in prison. However, it likely resembles the overall health care trends in Canadian society.³⁹



Across different countries, older offenders are one of the most expensive age cohorts to incarcerate. Research in Australia and the U.S. have estimated the health care costs of the older prison population to be 2-4 times higher when compared to their younger counterparts.⁴⁰ Canada is no exception. It costs, on average, \$116,364 per year to keep an inmate incarcerated compared to \$31,052 to maintain a sentenced person in the community.⁴¹ Several CSC staff members we spoke to discussed the costs associated with multiple medications that many older individuals in federal custody are prescribed, specialized

³⁸ CSC's health care budget was \$259,708,430 in 2017-18.

³⁹ For example, the Fraser Institute (Oct. 2017) found that "... in 2014, the latest year of available data, the average per-person government spending on health care for Canadians between the ages of 15 and 64 was \$2,664. Compare that to the cost for those 65 and over who had average annual per-capita health care costs of \$11,625, which was 4.4 times greater than the 15–64 average."

⁴⁰ See for example: Aday, R. (2003); Baidawi, S., et al. (2011); Chiu, T. (2010).

⁴¹ Public Safety Canada. (2018).

medical equipment (lifts, specialized tubs and transport vehicles) and the significant overtime costs required to carry out medical escorted temporary absences. At one of the institutions, three of the five beds in the institution's infirmary are taken up by older individuals who are very ill and had been there for extended periods. One older individual has spent eight years in the prison infirmary, and has become increasingly dependent and bed-ridden. Providing palliative or end of life care in a prison context is excessively costly, challenging and may not be necessary for public safety reasons.

Pain Management Behind Bars

Many of the older individuals in federal custody reported experiencing chronic and sometimes severe pain resulting from cancer or arthritis, and that it is not being well managed by prison health services. A few reported that they were able to get a second mattress, purchase an orthopedic mattress, or get extra pillows to help with their pain, but most were refused these items, and there are inconsistencies across institutions about this. Several individuals have been prescribed Tylenol or Ibuprofen to help alleviate pain, but most stated that the medication was ineffective. Stronger, more effective pain management medications are difficult to get within a prison environment.

CSC's policy framework for promoting wellness and independence of older persons states that CSC will:

- Review barriers to prescribing narcotics for pain management and continue its pilot project on pain management where a multi-disciplinary team utilizes a range of strategies to address the needs of those with chronic pain.
- Review offender medications with an aim to 'de-prescribing' medications deemed unnecessary or inappropriate and/or introduce new medications that may improve outcomes.

These are encouraging initiatives that have the potential to help alleviate some of the stress and frustration those with chronic/severe pain reported experiencing.

Specialized Healthcare Units

CSC has established two specialized healthcare units for individuals requiring additional assistance and/or care because of age-related issues. The regional treatment centre (RTC) in the Pacific region has a psycho-geriatric unit with a Peer Assisted Living Program (PAL program)⁴² and Bowden Institution has an Assisted Living Unit (ALU)⁴³. PAL and ALU clients are housed on the bottom tier with an adapted shower (shower wand, slip resistant flooring, and built-in shower seats), a therapeutic tub, cells are outfitted with a hospital bed, two emergency call buttons located at the door and bed and a built-in grab bar at the toilet. The admission criteria for a PAL/ALU patient includes those who can no longer live safely or independently in a regular institutional environment due to complex health care needs. Though these units have helped many patients function within a correctional environment, several challenges are reported by staff, caregivers and clients alike:

- A lack of 24 hour nursing care.
- Security staff are not suitably selected, nor are they provided with specialized or sensitivity training.



Pacific Regional Treatment Centre: Arjo Tub

⁴² There are 24 PAL caregiver beds in the upper tier, 48 PAL client beds on the lower tier and 24 Intermediate Mental Health beds on the upper tier.

⁴³ The Assisted Living Unit has 15 cells for patients with physical health needs. This unit is unique in that it has a nurse staffed on the unit from 8 a.m. to 4 p.m. weekdays and will soon have a second nurse to cover weekends and evenings. Currently, the unit has a ratio of 22 patients to one nurse. The unit also employs a number of caregivers who live on the upper tier of the unit. Currently there are 1.5 caregivers to each ALU patient.

- There is no policy direction (Commissioner’s Directive) specific to these units.
- There is a lack of an oversight or patient advocacy mechanism (e.g., some geriatric clients are completely reliant on CSC staff to manage their health care decisions as they do not have the capacity to form or provide free and informed consent).

A recent external evaluation of the Regional Treatment Centres,⁴⁴ commissioned by CSC, and an ethics analysis of the Peer Assisted Living Program⁴⁵ support many of the concerns brought forward by staff and clients in the course of this investigation.

The Cases of Two Women Requiring Specialized Care

Investigators were told of a case of a woman who is elderly, possibly starting to show early signs of dementia and who requires the assistance of others to care for herself. She does not currently have a caregiver. Staff and inmates reported that she often hoards canteen items under her bed which attracts insects, goes days/weeks without bathing/showering, rarely cleans her cell and has incontinence issues which are difficult for her to manage on her own. She is unable to cook her own food and while not generally allowed, another woman cooks food for her and staff “look the other way” as they realize how difficult the situation is.

Staff also described a situation where a woman who was palliative and nearing death was kept at the prison despite pleas from staff members to move her to a hospice. She was eventually moved to a hospice but only after staff refused to work as they felt they were not able to properly care for her medical needs.

There is no available data on the number of individuals living with dementia or Alzheimer’s disease behind bars. That said, inmates with dementia or Alzheimer’s disease face significant challenges in Canada’s federal prisons. CSC staff reported receiving little to no training with respect to dementia or Alzheimer’s disease and this was the case even among those working on units where these individuals resided. Staff also indicated that there are few resources to complete assessments of possible dementia and there is ongoing debate regarding the most appropriate assessment tools. The situation for Indigenous offenders may be direr. Research suggests that dementia

⁴⁴ The independent review was conducted by Dr. John Bradford, an eminent Forensic Psychiatrist (Dec. 2017).

⁴⁵ Jiwani, B. (June, 2017).

rates among First Nations people (in Alberta) are reported to be 34% higher than the general population.⁴⁶

Individuals with dementia not only pose significant challenges for staff within institutions but also in terms of community reintegration (appropriate housing, care). Since violent or aggressive behaviour can be related to dementia, there is considerable stigma and/or resistance to accept or place sentenced individuals in long-term care or nursing facilities. This situation, however, does not diminish CSC's obligation to create alternatives for these individuals, including individuals who no longer have the capacity to provide informed consent.

CSC staff often go to great lengths to care for or find a work around in a system that is not known to be especially flexible or adaptable. That said, one has to question what is being accomplished in managing an individual with dementia who may no longer know or understand why they are in prison in the first place. Moreover, the reasons for sentencing may no longer be applicable or relevant. CSC has an obligation to create alternatives and fund community facilities such as halfway houses to provide nursing and hospice services.

⁴⁶ Jacklin, K.M., Walker, J.D., & Shawande, M. (2013).

A Case of Dementia

This joint investigation, though largely focused on systemic issues facing older persons in federal custody, was grounded in individual cases. One case, in particular, stands out. In April 2017, a 66-year-old male, who had been supervised in the community since 2008, had his parole suspended as a result of behaviours stemming from a deterioration in his mental health. The individual left the halfway house where he had been residing, took possession of his vehicle and drove through the Canada/United States border, without a valid driver's license. He was arrested by U.S. authorities but not charged because of his mental health condition. At the time of the incident, the individual had advanced dementia. Reports indicate that he did not know where he was or what date it was, nor was he able to respond appropriately to other simple questions. His day parole was suspended by CSC. The Parole Board of Canada terminated his day parole three months later.

The individual was placed in a temporary detention unit, and subsequently transferred to the Regional Treatment Centre where his health continued to deteriorate. It got to the point where he required constant staff supervision. He was eventually transferred to a community hospital after spending three months in a federal facility. He died eight days later as a result of aspiration pneumonitis.

This case raises important human rights and dignity concerns, specifically: why and how it came to be that an elderly man with advanced dementia was brought back to a federal penitentiary even as his physical and mental capacities deteriorated. Though perhaps an isolated example, this case highlights the growing challenges that corrections and parole authorities face as Canada's prison population ages behind bars. In this particular case, the system failed to provide a safe, appropriate and timely alternative to incarceration for an individual experiencing rapid health decline.

Peer Support

CSC currently has three peer support programs providing assistance to individuals:

- Peer Assisted Living (PAL) caregivers, who provide support to those requiring assistance in day-to-day activities.
- Peer Education Coordinators, which is peer-to-peer support provided by inmates who offer social or emotional support or practical assistance to other inmates on a one-on-one basis.

- Peer mentorship reflects a gender-specific approach with the goal of empowering women offenders and increasing self-efficacy. Peer mentors provide guidance on appropriate resources and services within and outside the institution.

While there is limited research to corroborate the effectiveness of these types of programs⁴⁷, there is some evidence to suggest that they are beneficial in terms of helping individuals adjust to prison life, decreasing their sense of isolation, allowing for positive role modeling, and encouraging healthy lifestyles.⁴⁸ Peer support is particularly important for those who may be very ill or who require significant assistance in day-to-day activities.

The Office and the Commission conducted interviews with 18 individuals who are either Peer Assisted Living caregivers or Peer Education Coordinators. These individuals play a key role in the everyday lives of many older individuals in federal custody. The PAL caregivers, for example, are essential to the functioning of the psycho-geriatric unit. PAL caregivers are provided with training (biohazard training, use of the therapeutic tub) and ongoing support from healthcare staff. Community organizations (Alzheimer's Society, Diabetes Association and the Abbotsford Hospice) also come into the institution to conduct specific training. There is a comprehensive caregiver manual that contains information on hand washing, blood and body fluid precautions, client care procedures (mouth care, feeding, collecting specimens, preventing sores and managing skin integrity).

Overall, though there may be potential liability in peers helping peers, it appears that both programs (PAL Care Givers and Peer Education Coordinators) have a rehabilitative effect. Many who were interviewed noted that they are doing this type of work because they want to atone for their crimes and give back. They expressed how they can see themselves needing this type of assistance at some point, and are therefore providing the type of care they would expect in the same situation.

Though these programs are operational in some of the institutions that were visited for this investigation, there is little consistency across institutions. Some caregivers have

⁴⁷ Woodall, J., South, J., Dixey, R., de Viggiani, N., & Penson, W. (2015).

⁴⁸ Her Majesty's Inspectorate of Prisons. (Jan. 2016).

received training and others have not. A comprehensive program should be established and implemented at all institutions. That said, it must be noted, however, the PAL caregiver program should not be used to unnecessarily keep individuals who pose no undue risk to society incarcerated and may be better accommodated and managed in the community.

Recommendation 10:

We recommend that CSC introduce standardized peer assistance and peer support programs across all institutions. These programs should be modeled along the lines of the caregiver program at Pacific Regional Treatment Centre, including a comprehensive manual, recurring training and ongoing support to peer caregivers.

Finding 5: Prison is no place for offenders who require end-of-life care

Sick, palliative and terminally ill individuals continue to live out their single greatest and expressed fear—dying in prison. Prison is an unsuitable place for an individual who requires end-of-life care. CSC should not be in the business of providing palliative or end-of-life care, nor should it facilitate or enable medically assisted death to take place in federal correctional facilities. Coordinated and accelerated case management of seriously or terminally ill individuals is required between correctional and parole authorities.



Dorchester Penitentiary – prison infirmary: Patients are transferred to the prison infirmary when they become too ill or their needs require a high degree of care because of illness or mobility issues.

On paper, CSC's "*Hospice Palliative Care Guidelines for Correctional Service Canada*" follow the principles and standards of the Canadian Hospice Palliative Care Association. Based on current research and review of palliative care frameworks within Canada,⁴⁹ a number of gaps exist in CSC's approach:

- Lack of 24 hour nursing care in the institutional environment (regional hospitals do, however, have 24 hour nursing care);
- Lack of recognition and support for the family members of those who have a life-threatening illness;
- Lack of ongoing education, specialized training and support for those providing palliative care services;
- Failure to establish outcome measures and monitor progress in offering palliative care services; and
- Lack of strong relationships with community partners.

Prison is not the appropriate environment to provide end of life care. Hospice and palliative care are specialized services and should not take place in a prison setting. A community placement would more easily facilitate visits from family and friends and ensure that federally sentenced individuals have access to care that is equivalent to that offered in the community. Human rights protection requires these kinds of appropriate alternatives. Moreover, community placements would also bring a more humane approach to very difficult situations.

CSC's recent review and assessment of chronic health conditions in individuals in federal custody age 65+ could help inform which individuals with terminal disease should be transferred from prison. Community placements in palliative or hospice care could be funded by savings generated by unnecessary incarceration.

⁴⁹ See for example: Discussion papers and framework developed by Quality End-of-Life Care Canada and The Canadian Hospice Palliative Care Association (May 2012; Dec. 2012; March 2013; & March 2015).

Dying in Prison – Is it ever a ‘real’ choice?

The number of times that investigators from the Office and the Commission heard the phrase “*I just don’t want to die in jail*” during the course of this investigation cannot be overstated. Although a few interviewees discussed their wishes to die within the prison walls with their “friends” (whom they consider *family*),⁵⁰ most expressed a strong desire to be able to leave prison prior to their death. In comments arising from the factual review of this investigative report, both the Parole Board of Canada and CSC challenged the validity of the report’s finding that prison is not an appropriate place for offenders who require end of life care. Specifically, concern was raised that not all terminally ill inmates wish to leave prison to receive end of life care, particularly those whose only remaining social or institutional support system(s) reside within the prison context. The assumption underlying this position seems to be this: if an inmate nearing end of life expresses their wish to die in prison then that choice should be respected to the extent possible. However, thinking about end of life care in the context of incarceration requires more scrutiny and self-reflection on ethical, moral and practical grounds.

On the issue of choice, prisons are not environments where personal autonomy, free will and consent thrive. Personal choice is always bound by the reality and fact of incarceration. Compliance with authority is not only expected in prison; it is routinely enforced, compelled and even sometimes coerced. An inmate’s “choice” to die in prison must be looked at in context of their ability or capacity to form or express their wishes in a free, voluntary and informed manner. The fact that an inmate, for whatever reason, may not have a “community,” or friends or family outside the prison context is not sufficient basis to conclude that the inmate wants or should be allowed to die in prison, either as a matter of “choice” (which it is not) or because there is no other more humane or dignified alternative available. That an inmate could express a desire to die in prison rather than in the community is more likely indicative of the psychological adaptations to institutionalization (e.g. diminished sense of self-worth and personal value, inability to make independent decisions, lack of interest in the outside world, social alienation and withdrawal, dependence on institutional structures) than an

⁵⁰ The term “family” is used in this context to describe those who have become like family members as a result of spending many years together in prison. Many older persons in custody have lost contact with their families of origin.

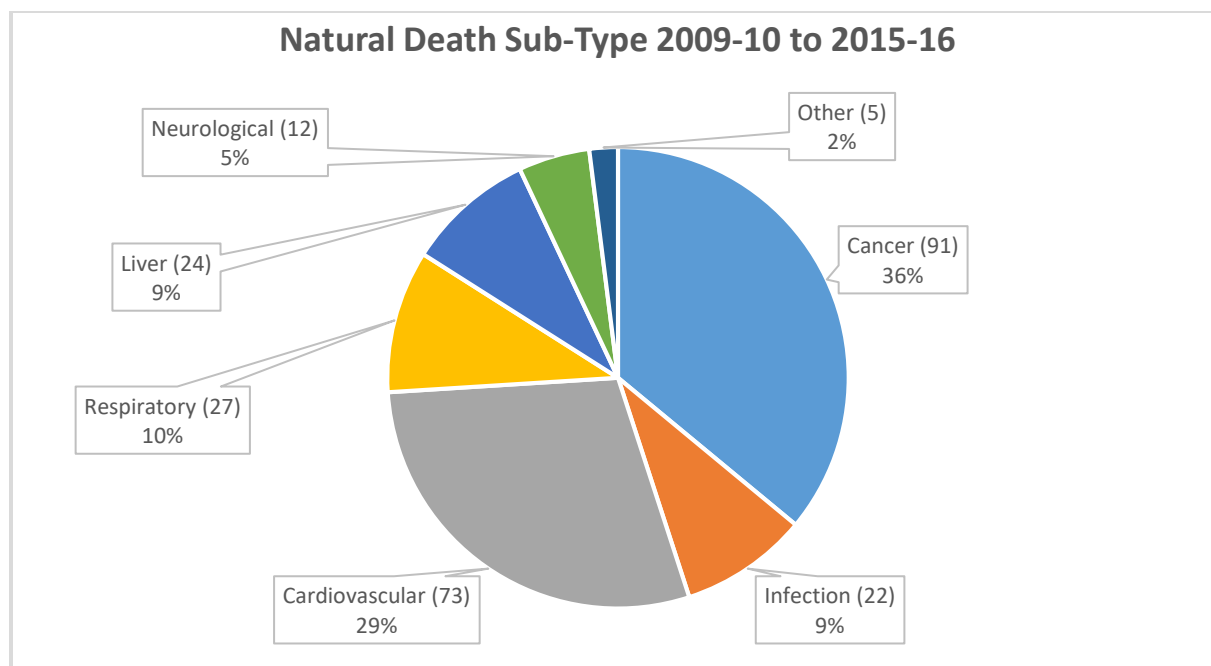
expression of free choice. There is nothing “normal” about expressing a desire to die in prison.

This underlines the need for CSC to refocus resources to promote community connection for *all* inmates. Rehabilitation and reintegration should include actively encouraging and facilitating inmates in maintaining meaningful connection to family, friends and community outside the prison walls (e.g. support services for visiting loved-ones, other visitation supports). Failing to do so and then arguing that it is an inmate’s “choice” to die in prison because they have lost their connection with their community is not acceptable.

End of life planning requires options, choice and time. If all three contingencies are exhausted, then prison becomes the only “choice” an inmate at end of life can make about where they will die.

Not surprisingly, the majority of older persons who die in prison do so from natural causes. In 2017–2018, 34 offenders age 50+ died of natural causes in federal custody.⁵¹ In November 2017, CSC released its *Annual Report on Deaths in Custody* which examines all deaths (natural and non-natural) in custody that occurred in a CSC institution between 2009–10 and 2015–16. During this time, 254 deaths from natural causes occurred.

⁵¹ CSC Data Warehouse. (June 2018).



Source: CSC. (Nov. 2017a).

Significantly, among those who died of natural causes, 48% had a ‘Do Not Resuscitate’ order on file and 50% were receiving palliative care. If we agree that prison is not an appropriate place to provide palliative or end-of-life care, the question to be asked is this: why were these individuals, whose deaths were expected, allowed to die in prison? Equally troubling is that the average age of those who die of natural causes in custody is far below life expectancies of the general public.⁵² Between 2009–10 and 2014–15, two-thirds of natural deaths in federal custody were under the age of 65; just over one-quarter were 65-74 years of age.⁵³ While it is difficult to ascertain the specific natural mortality rate for offenders under federal sentence, these numbers raise significant concerns:

- Why is an older individual in federal custody at higher risk of dying prematurely?
- What preventive or protective factors have been put in place to mitigate the incidence of chronic disease in federal correctional facilities?
- What is CSC’s duty of care to mitigate health risks that contribute to in-custody death?

⁵² On average, the overall Canadian life expectancy is 79 years for males and 83 years for females (Statistics Canada, 2017).

⁵³ CSC. (Nov. 2017b).

All things being equal, natural cause mortality (and the costs associated with end-of-life care in prison) can be expected to only increase as the population behind bars progressively ages. That said, a federal sentence should not be predictive of a shortened life expectancy.

Recommendation 11:

We recommend that where the death of an offender is reasonably foreseen, CSC and the Parole Board be required to use proactive and coordinated case management to facilitate the offender's safe and compassionate release to the community as early as possible.

Finding 6: Lack of adequate and humane release options

“I got no hope, I just don’t want to die in jail...I’m not going to die in this cage ... good Lord, when does it end people. I’m 68 years old and have been in here for 40 years.” (Inmate)

Compassionate Release

The Office has previously identified that criteria for granting compassionate release to a terminally ill offender are extremely restrictive.⁵⁴ Pursuant to paragraph 12(1)(a) of the *Corrections and Conditional Release Act* (CCRA), the Parole Board may grant parole by exception to an offender *who is not yet eligible for day and/or full parole and who is terminally ill*. In accordance with the legislation, Board members must determine whether the offender is terminally ill and whether the offender meets the criteria for parole set out in section 102 of the CCRA. Previously, the documentation required by

Compassionate Release

Two cases were brought forward by CSC staff members during interviews that demonstrate how difficult it is for a terminally ill patient to be allowed to die in the community. In the first case, an elderly patient was dying of cancer in a medium security institution and CSC staff put his case forward to the Parole Board to be granted release to a hospice within the community. The response from the Parole Board was that it wanted to see the offender managed in a minimum security institution before granting him release to the hospice. He was eventually released to the community, but died 2 hours after release.

In the second case, CSC staff supported the transfer of a terminally ill patient (minimum security) to a hospice facility within the community, and brought the case forward to the Parole Board. There was concern that the patient may not have much time left and that they may lose the spot they had secured with the hospice so the institution tried to push the Parole Board to make a decision quickly. The Board responded that should it not be able to make a decision quickly, CSC could use a medical escorted temporary absence (ETA) to accommodate the offender in the community hospice. A medical ETA requires uniformed guards to be present with the offender at all times. Quite appropriately, the hospice was not supportive of these conditions.

⁵⁴ See, for example, Office of the Correctional Investigator, Annual Reports 2010-11 and 2014-15 as well as, *An Investigation of the Correctional Service’s Mortality Review Process* (Dec. 2013).

the Parole Board includes medical evidence/rationale that end of life is not only imminent, but also certain; in some cases, the Parole Board has required medical doctors to provide a defined period of life expectancy. Such criteria make it very difficult for those in severe health decline behind bars to ever be released. Following the Office's 2016-17 Annual Report in which the Office encouraged CSC and the Parole Board to work closely to ensure that palliative and terminally ill inmates seek Section 121, 'parole by exception', as early as possible, the Parole Board reviewed its policy to ensure consistency with the legislative criteria. As a result, the Parole Board made changes to its *Decision-Making Policy Manual for Parole Board Members* to indicate that it is not necessary to require a defined period of life expectancy when reviewing cases for parole by exception under the "terminally ill" legislative criteria. Statistics indicate that more releases are being made since these changes were put into effect.

The Challenge of Getting Someone Out to the Community

A case was recently brought forward to the Office involving a 64-year-old man certified under the *Mental Health Act*. CSC was attempting to get the individual into a long-term care facility in the community. The case was brought forward to the Parole Board, however a panel hearing could not be scheduled before the expiry of his last day of parole which meant that the long-term care bed that CSC had secured for him could not be held and he lost it.

Following this, a CSC parole officer requested that the PBC hearing for this man be held at the hospital he was staying at as it would be difficult to transport him to a hearing. Moreover, the parole officer felt that his medical team at the hospital could participate in the hearing in order to answer any questions the Parole Board may have regarding his health or release plan, which would also speak to his risk. The condition of the patient meant that he was unable to answer any complicated questions, show insight or speak about his health or the release plan in place for him. The response from the Parole Board was that they do not conduct parole hearings at hospitals even though the hospital had guaranteed an appropriate space.

Note: In their review of this report, the Parole Board clarified that it does and has conducted hearings in hospitals. The case referred to above may have resulted from a lack of communication/knowledge of Parole Board policies/procedures.

It serves no public safety purpose to keep palliative individuals in a prison environment. CSC has committed, in its proposed policy framework, to monitor the timelines and quality of each step in the process from the designation of a terminal illness to submission to the Parole Board and decision. While this is an important step, CSC and

the Parole Board must work together more closely to accelerate cases of dying inmates to be prepared and heard before the Parole Board in the timeliest manner possible.

It is noteworthy that some American jurisdictions facing an increasing number of older and terminally ill individuals in custody have responded in some innovative ways. The state of Connecticut, for example, opened a nursing home through a private contractor to house inmates released to the community under medical parole. This project has resulted in significant cost savings for the State. The U.S. Federal Bureau of Prisons (the American equivalent to CSC) has expanded its guidelines for compassionate release—allowing for consideration of a reduction in sentence to inmates who have been diagnosed with a terminal, incurable disease and whose life expectancy is 18 months. Even elderly prisoners who are not terminally ill and do not have a disability can apply for early release under the new rules. A recent U.S. prison reform bill (2018: H.R. 5682: *An Act to provide for programs to help reduce the risk that prisoners will recidivate upon release from prison, and for other purposes*) further facilitates compassionate release by lowering the age from 65 to 60 and decreasing time served from 75% to two-thirds.⁵⁵

As depicted in the following text-box, many U.S. states use mechanisms such as medical parole (criteria based on severity of disease, the ability of prison health services to treat the disease and the cost of continued incarceration) or geriatric release (criteria based on having completed a certain percentage of their sentence and risk level) to carry out what would be considered the equivalent of compassionate release in Canada.

To improve human rights protection and cost effectiveness, the Office and the Commission continue to call for better, safer and less expensive options in managing this older and vulnerable prison population that poses a reduced risk to institutional security and public safety. A model involving medical or geriatric parole would allow individuals to apply for early release based on their age, number of years behind bars and current health status. The cost-savings of moving some of these individuals into a retirement/nursing home or a specialized community based residential facility (halfway house) would be substantial. CSC could reallocate funds currently being used to maintain palliative individuals behind bars to pay for community placements that would be more responsive to dignity concerns.

⁵⁵ Library of Congress. (2018).

Medical Parole and Geriatric Release Models

Some U.S. states use a medical or geriatric parole model which allows for an inmate with a short life expectancy and/or who is deemed to no longer pose a threat to society to be paroled. The definition and parameters of medical/geriatric parole differ among states, but the eligibility/evaluation requirements are largely based on some/all of the following criteria:

- Minimum age.
- Minimum time served.
- Medical condition/needs.
- Risk to public safety.
- Criminal history.
- Institutional conduct.

There may be exclusions to participation based on, for example, convictions for violent or sexual offences as well as conditions associated with a medical/geriatric parole release such as the need for a release plan, predetermined release location, or program participation.

To illustrate:

- Colorado: eligible applicants must be 60 years of age, incapacitated, not a threat to society, not likely to re-offend and not convicted of certain felonies. (CO Rev Stat § 17-22.5-403.5, 2017).
- Connecticut: eligible applicants must be physically or mentally debilitated, incapacitated or infirm as a result of advanced age or as a result of a condition, disease or syndrome that is not terminal as to be physically incapable of presenting a danger to society and have served half of their sentence (CT Gen Stat § 54-131k, 2012).

Source: Chiu, T. (2017).

High cost, Low risk

Expanding release options for older individuals in federal custody who may pose no undue risk to public safety not only makes economic sense, it is also validated empirically. The research shows that criminal risk tends to decline significantly as people age. Involvement in criminal activity increases substantially in early adolescence, peaking in the late teens or early twenties, and then progressively declines. Life transitions such as completing education, securing employment, marriage and parenting

are known to reduce the likelihood of offending.⁵⁶ Aging also often results in a decrease in physical strength and possible illnesses and/or chronic conditions that are likely to further decrease an individual’s opportunity or drive to participate in certain types of criminal activity.

A recent study conducted by CSC found a “...clear linear relationship between age and returns to custody and returns with an offence.”⁵⁷ Based on a release cohort from 2007 to 2012 of 27,066 federal offenders, 17.9% of those 55 years of age and older were returned to custody for any reason (i.e. revocation or new offence), the lowest rate of return for all age groups.

Age at Release	Any Return to Custody (%)	Any Revocation with offence (%)
Under 25	57.8	19.2
25-30	52.1	15.1
30-35	48.5	13.1
35-40	47.8	12.7
40-45	45.9	10.6
45-50	40.0	9.3
50-55	32.8	7.1
55+	17.9	3.4

Source: CSC (April 2018).

To put these numbers into perspective, of the individuals who were interviewed for this investigation, interviewers observed the following regarding some older individuals:

- several rely on mobility devices to move around (wheelchair, walker, cane);
- some cannot even sit up straight in their wheelchair;
- a few have colostomy bags;
- others require transfer poles to get out of bed (one is unable to get out of his bed without the use of a lift);

⁵⁶ For more information, see: Farrington, D., Loeber, R., & Howell, J.C. (2012); Sweeten, G., Piquero, A., & Steinberg, L. (2013); and Abeling-Judge, D. (2016).

⁵⁷ CSC. (Apr. 2018).

- at least one has advanced dementia while others appear to have some cognitive difficulties;
- a few are deaf, many are hard of hearing;
- some are nearly blind or unable to communicate;
- several have chronic health conditions; and
- one is dying of cancer.

As one incarcerated individual stated, “what do they think I am going to do if I get out, attack someone with my walker?”

Several CSC staff commented that there are individuals who they feel should not be in prison. They said those individuals should be moved to the community to better accommodate their healthcare needs or because they are elderly and no longer present a risk to society. One staff member stated: “we need a small long-term care facility for our elderly inmates.”

It would be significantly less costly and more humane to care for these individuals in a community long-term care facility. That is why CSC needs to enhance partnerships with outside service providers that would allow older individuals in federal custody, who pose no undue risk to public safety, to serve out their sentence in a long-term care or hospice setting. Many of these changes could likely be achieved by reallocating existing resources from institutional to community corrections.

Recommendation 12:

We recommend that the Minister of Public Safety review and assess release options (e.g. medical and/or geriatric parole) for older and long-serving offenders who do not pose undue risk to public safety, and propose amendments to the *Corrections and Conditional Release Act (CCRA)* as appropriate.

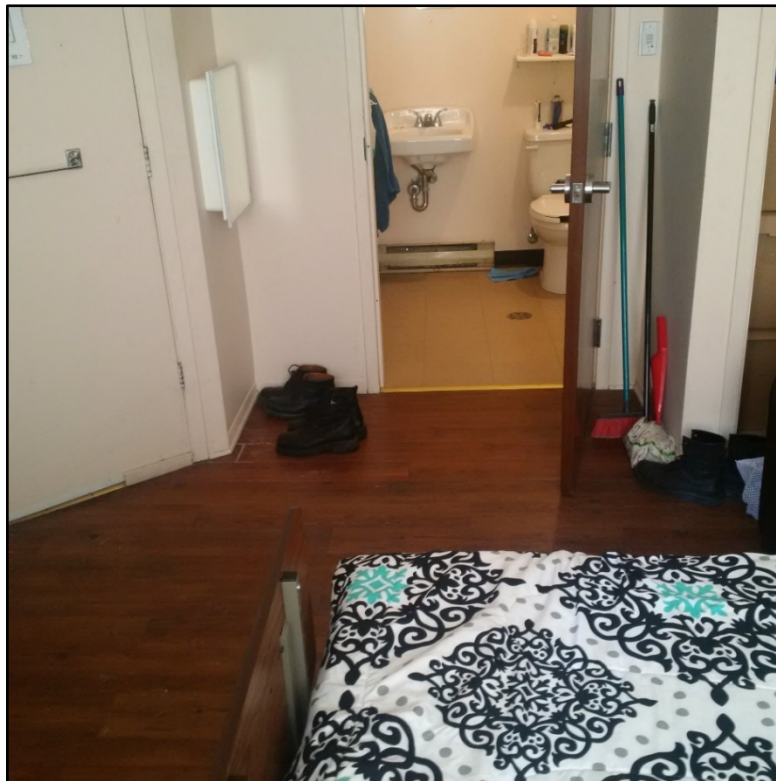
Recommendation 13:

We recommend that release planning for older offenders include retirement financial planning, and the management of personal affairs, such as making a will and planning for the end stages of life.

Finding 7: Community alternatives are lacking and are not well resourced

An Alternative Approach: Accessible and Specialized Halfway Houses

This particular section of our report puts the Office and the Commission in step with community groups across Canada. St. Leonard's Society for example, has long been advocating for a specialized community approach to assisting older individuals in federal custody to make a successful transition to the community. Many of the important pieces are already in place. There are halfway houses that are ready and willing to pilot an aging well approach in the community. Maison Cross Roads (Montreal, Que) and Haley House (Peterborough, ON) are excellent examples of halfway houses for men that have been specially renovated to meet some of the needs of aging and mobility challenged offenders released to the community (elevators and lifts, wide doors, accessible rooms and bathrooms). These and other halfway houses are also interested in providing additional services if they are provided with appropriate funding, including nursing services, palliative care and end of life care.



Maison Cross Roads, Montreal, Quebec

The issue, however, is the shortage of accessible beds in community based residential facilities across the country for those requiring specialized care. As a result, inmates with mobility or health issues (especially those who use wheelchairs or have dementia) cannot transfer to the community where they might live closer to their family and friends. This situation is particularly acute for women with mobility issues who already must contend with fewer options and resources. CSC staff interviewed referred to inmates who have been granted parole but who have to wait in a federal institution—sometimes for months—before being released to an accessible community facility. In other words, they have been granted parole by the Parole Board of Canada but are being kept in a prison because of a lack of resources and bed space appropriate to their needs in the community.



Maison Cross Roads, Montreal, Quebec

Major renovations to accommodate those with mobility or health care challenges are costly⁵⁸ and CSC does not provide sufficient funding for this work. Therefore, halfway houses must look elsewhere for funding. Halfway houses also require funding to ensure

⁵⁸ One of the community-based residential facilities visited for this investigation indicated a cost of approximately \$450,000 to install an elevator. The cost was high because one of the floors also had to be renovated in order to support the elevator.

they have the services and programs to meet the unique needs of this population (nursing care, gerontologists, personal support workers).

Findings from a recent Auditor General of Canada (OAG) report on community supervision support the findings of this investigation.⁵⁹ The audit examined CSC's ability to adequately supervise offenders in the community and accommodate their needs when returning to the community. The OAG found the following:

- Suitable residency space was not always available which meant that offenders approved for conditional release may be required to wait in prison until an appropriate space becomes available that meets their needs (i.e. mental health, substance abuse and mobility or accessibility issues), risk and desired location. Some may agree to be released to a facility in another community rather than wait.
- Overall wait times for placement into a community facility have increased.
- CSC does not have a long-term plan to meet the needs of offenders who will require placement in community facilities and has not increased the number of housing spaces to meet the demand.
- CSC does not maintain data on the types of specialized housing offenders require which makes it difficult to prioritize facilities for future expansion.
- CSC does not forecast needs by population or for specialized housing.

CSC's response to the findings of the OAG were encouraging. The Service committed to establishing a long-term plan for the management of community accommodation and the development of a comprehensive solution for both bed-inventory management and the matching of offenders to community facilities. This work should not be completed in isolation. The community knows how to deliver these services. That is not the problem—they are experts in their field. The problem is they require access to federal funds that are now being spent on unnecessary incarceration.

⁵⁹ Office of the Auditor General of Canada. (2018).

Our site visits to community-based residential facilities identified the incredible work that is being done by community staff on a very limited budget. These places provide the much needed support, guidance and leadership to their clients with little funding. They go above and beyond to help these individuals reintegrate while at the same time keeping their communities safe. When asked about the support he was receiving at the halfway house, one individual said: “it’s like a big cushion, it helps ease the pain of not having anything.” Another individual, referring to the halfway house, told us: “It was the biggest piece that helped me, even the cooking.”

Community-based residential facilities need funding to ensure they are accessible, to hire specialized staff (nurses, personal support workers, gerontologists, occupational and physiotherapists), to provide appropriate care for their clients and to expand their reach. CSC needs to reallocate existing institutional funding and resources to these available specialized community based residential facilities to manage older individuals in the community in conditions that are more humane and dignified.

Recommendation 14

We recommend that CSC enhance partnerships with outside service providers and reallocate funds to create additional bed space in the community and secure designated spots in long-term care facilities and hospices for older individuals who pose no undue risk to public safety.

Finding 8: Need for a comprehensive and funded national strategy

Given the findings of this report, there is a clear and urgent need for an integrated, comprehensive and funded National Older Offender Strategy that considers the rights and needs of older persons in relation to: physical and mental health; social needs; accessibility; safety (bullying, elder abuse); meaningful participation in rehabilitation (vocational, correctional and educational programs); age-responsive risk assessment; and reintegration, including release planning.

The strategy should allow for more responsive, safer and more humane models of elder care and end-of-life care in the community at significantly less cost than incarceration. This would require better access to release options, funding arrangements and partnerships that would facilitate outsourcing of care to community service providers.

Recommendation 15

We recommend that CSC fund and implement an integrated and comprehensive National Older Offender Strategy immediately. The strategy should:

- a. reflect the recommendations made in this report;**
- b. go beyond an “aging in place” approach, including the mandatory and ongoing review of release options for older individuals who do not pose undue risk to public safety;**
- c. examine, respect and respond to the intersectional characteristics and needs of older individuals in federal custody; and**
- d. establish a timeframe for assessing, retrofitting and, where necessary, building facilities under CSC authority to ensure accessibility.**

Conclusion

Where care and custody of older individuals is under state control, protection of human rights, dignity and respect must be underlying and overriding considerations. Though elder abuse and neglect occur in Canadian society, these issues remain largely hidden and undocumented in a prison setting. Dignity and respect for human rights must orient the care of all older individuals, including those in our prison system.

It seems surprising to have to actually say or note, but a few modest measures would go a long way to recognizing and addressing the needs of older individuals in federal custody and improving the quality, purpose and meaning of their lives behind bars. Rules, routines, conditions of confinement and environments that were originally put in place to manage more active, healthier and younger people are not necessarily responsive to the life trajectories, circumstances or needs of aging persons. Vocational training, employment, correctional programming or educational upgrading may not be as relevant or resonate in the same way they might for younger people. Some measures and adaptations could be easily implemented with little or no additional cost to CSC (access to canteen and gym, social programs, adapted fitness and wellness, medical mattresses, orthopedic/Velcro shoes).

As this joint investigation has shown, there are currently many individuals in federal penitentiaries who would likely be better and more appropriately placed in a community care facility (community based residential facilities, retirement home, nursing home, hospice, palliative care facility). CSC's proposed, though still draft, framework and approach to managing older persons in custody seems to rely on a concept of "aging in place," a strategy premised on providing, adapting or integrating spaces within mainstream institutions where aging individuals can safely and independently serve out their sentence for "as long as they are able." Given that prisons were never designed for older persons in the first place, dual strategies of "aging in place" (integrated accommodation) and "age tailored" (separate accommodation for older inmates with significant cognitive or functional impairments) could prove costly and may be unnecessary.

An alternative approach would be to move funding and resources from institutional to community-based facilities. If capacity in the community to manage an older individual

who meets criteria for medical parole or geriatric release is lacking, then CSC could engage with external service providers and reallocate funds that would otherwise be spent on avoidable (and costly) incarceration. The Parole Board would be in a better position to support a release plan that would allow older individuals meeting eligibility criteria to serve out their sentence with dignity in the community. Ultimately, it would be up to CSC to fund outsourcing of care for older persons transferred to the community. Accessibility of residential spaces, appropriate care and timely referral to community services should be viewed as essential services, rather than best practices. Finally, CSC should not see the development of a national strategy for aging offenders as an opportunity to seek additional resources or to create state-of-the-art in-prison geriatric facilities and services.

Recommendation 16

We recommend that CSC significantly reallocate existing institutional resources to community corrections in order to better support the reintegration needs of aging offenders.

Summary of Major Findings

1. Some older, long-serving federally sentenced offenders are being warehoused behind bars well past their parole eligibility dates.
2. There is no legal or policy recognition that older individuals represent a vulnerable population in prison or that they have unique characteristics, needs and rights which must be respected and met. As a result, their health, safety, dignity and human rights are not adequately protected.
3. Federal penitentiaries were never intended or physically designed to accommodate an aging inmate population. The physical infrastructure of institutions does not adequately meet the needs of older individuals in federal custody.
4. Correctional health care costs are rising as the number of aging individuals in federal custody with chronic disease increases.

5. Offenders with terminal illness and those requiring palliative care are living out their single greatest and expressed fear — dying in prison. Prison is no place for a person who requires end-of-life care.
6. Federal corrections lacks adequate, compassionate and responsive release options for older individuals in federal custody who do not pose an undue risk to public safety.
7. Community alternatives are lacking and are not well resourced.
8. There is a clear need for an integrated, comprehensive and funded National Older Offender Strategy that meets the characteristics and needs of older individuals in federal custody, and that ensures the protection of their human rights.

Summary of Recommendations

Recommendation 1:

We recommend that an independent review of all older individuals in federal custody be conducted with the objective of determining whether a placement in the community, a long-term care facility or a hospice would be more appropriate.

Recommendation 2:

We recommend that CSC develop a separate and distinct Commissioner's Directive specific to older individuals, which ensures that their specific needs and interests are identified and met through the provision of effective and adapted programs, services and interventions.

Recommendation 3:

We recommend that CSC provide staff with training in age-related needs — physical, social and psychological — as well as training on how to identify, respond to and appropriately manage behaviour related to dementia.

Recommendation 4:

We recommend that CSC re-examine its use of force training and policy to incorporate best practices and lessons-learned regarding use of force on older individuals (including those using mobility devices).

Recommendation 5:

We recommend that CSC offer appropriate work options (including accommodated options) for older individuals who want to and can continue working. In addition, regardless of whether an older individual can work, CSC should provide a reasonable living allowance to meet personal needs.

Recommendation 6:

We recommend that vulnerable populations (older offenders and those with mental and/or physical health issues) be monitored daily during lockdowns by professional health care staff.

Recommendation 7:

We recommend that CSC designate facilities for older individuals who want to live in such areas—and that such facilities are designed or retrofitted to ensure physical accessibility.

Recommendation 8:

We recommend that CSC create dedicated spaces and times where older individuals can assemble and socialize during institutional working hours, and allow them access to communal prison services during working hours (e. g. library, gym, canteen, visitation, cafeteria, hobby shop and yard).

Recommendation 9:

We recommend that social programs staff organize age-appropriate and disability-appropriate leisure, wellness and recreational opportunities (e.g. stretching, walking, aerobics, yoga, card games).

Recommendation 10:

We recommend that CSC introduce standardized peer assistance and peer support programs across all institutions. These programs should be modeled along the lines of

the caregiver program at Pacific Regional Treatment Centre, including a comprehensive manual, recurring training and ongoing support to peer caregivers.

Recommendation 11:

We recommend that where the death of an offender is reasonably foreseen, CSC and the Parole Board be required to use proactive and coordinated case management to facilitate the offender’s safe and compassionate release to the community as early as possible.

Recommendation 12:

We recommend that the Minister of Public Safety review and assess release options (e.g. medical and/or geriatric parole) for older and long-serving offenders who do not pose undue risk to public safety, and propose amendments to the *Corrections and Conditional Release Act (CCRA)* as appropriate.

Recommendation 13:

We recommend that release planning for older offenders include retirement financial planning, and the management of personal affairs, such as making a will and planning for the end stages of life.

Recommendation 14:

We recommend that CSC enhance partnerships with outside service providers and reallocate funds to create additional bed space in the community and secure designated spots in long-term care facilities and hospices for older individuals who pose no undue risk to public safety.

Recommendation 15

We recommend that CSC fund and implement an integrated and comprehensive National Older Offender Strategy immediately. The strategy should:

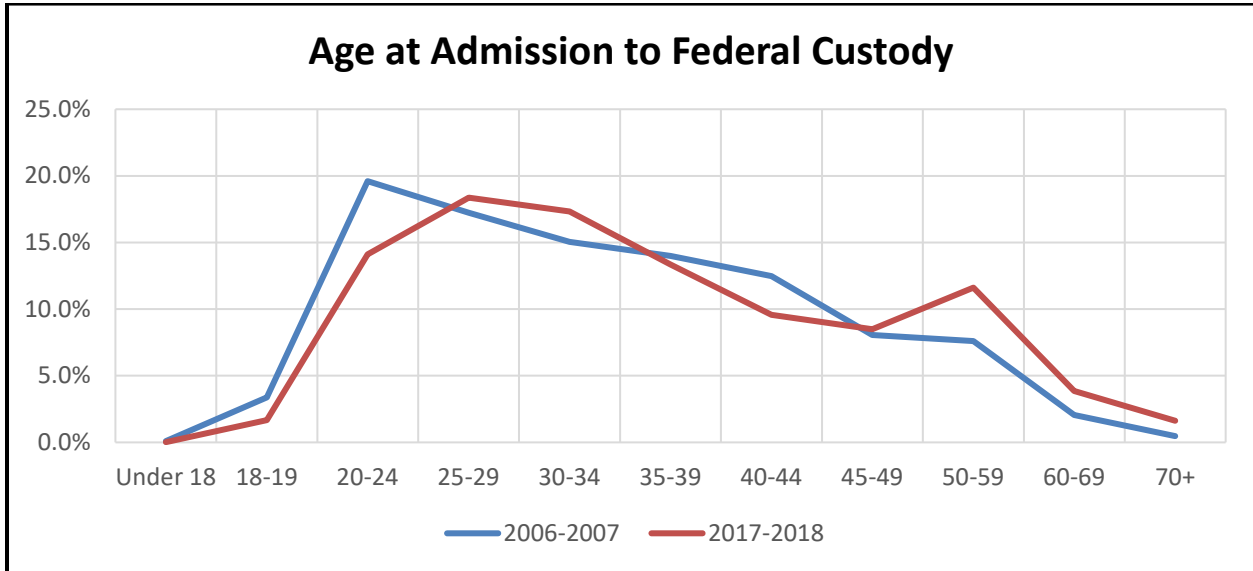
- a. reflect the recommendations made in this report;
- b. go beyond an “aging in place” approach, including the mandatory and ongoing review of release options for older individuals who do not pose undue risk to public safety;
- c. examine, respect and respond to the intersectional characteristics and needs of older individuals in federal custody; and

- d. establish a timeframe for assessing, retrofitting and, where necessary, building facilities under CSC authority to ensure accessibility.

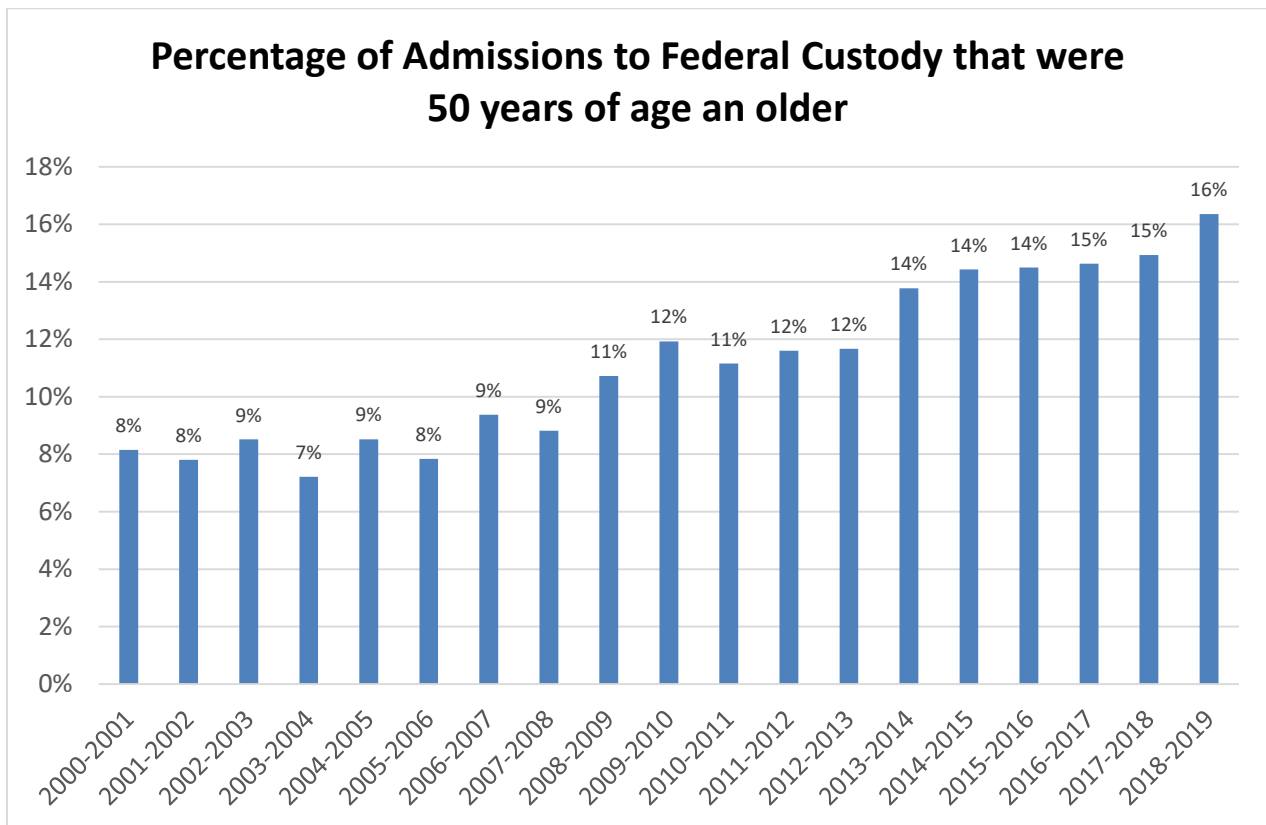
Recommendation 16

We recommend that CSC significantly reallocate existing institutional resources to community corrections in order to better support the reintegration needs of aging offenders.

Annex A: Detailed Statistical Tables and Graphs



Source: CSC Data Warehouse. (June 2018).



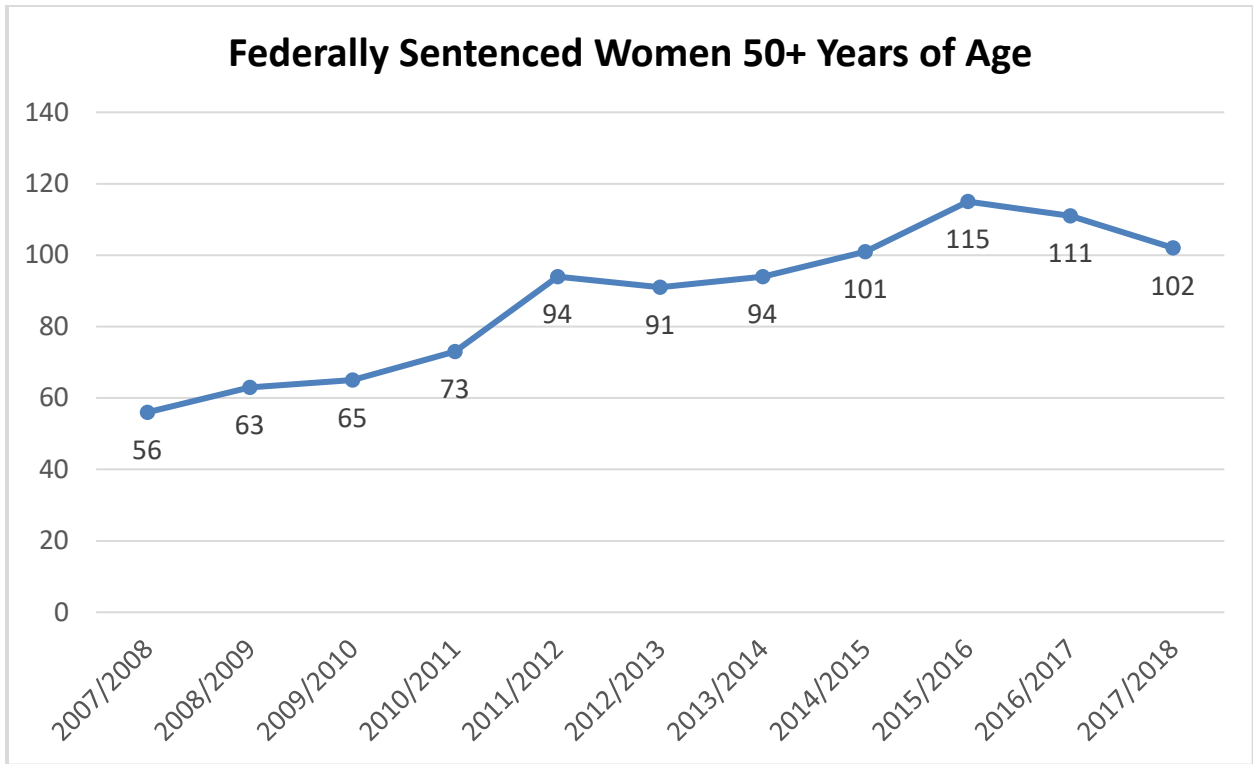
Source: CSC Data Warehouse. (Sep. 2018).

Regional and Institutional Inmate Population by Age

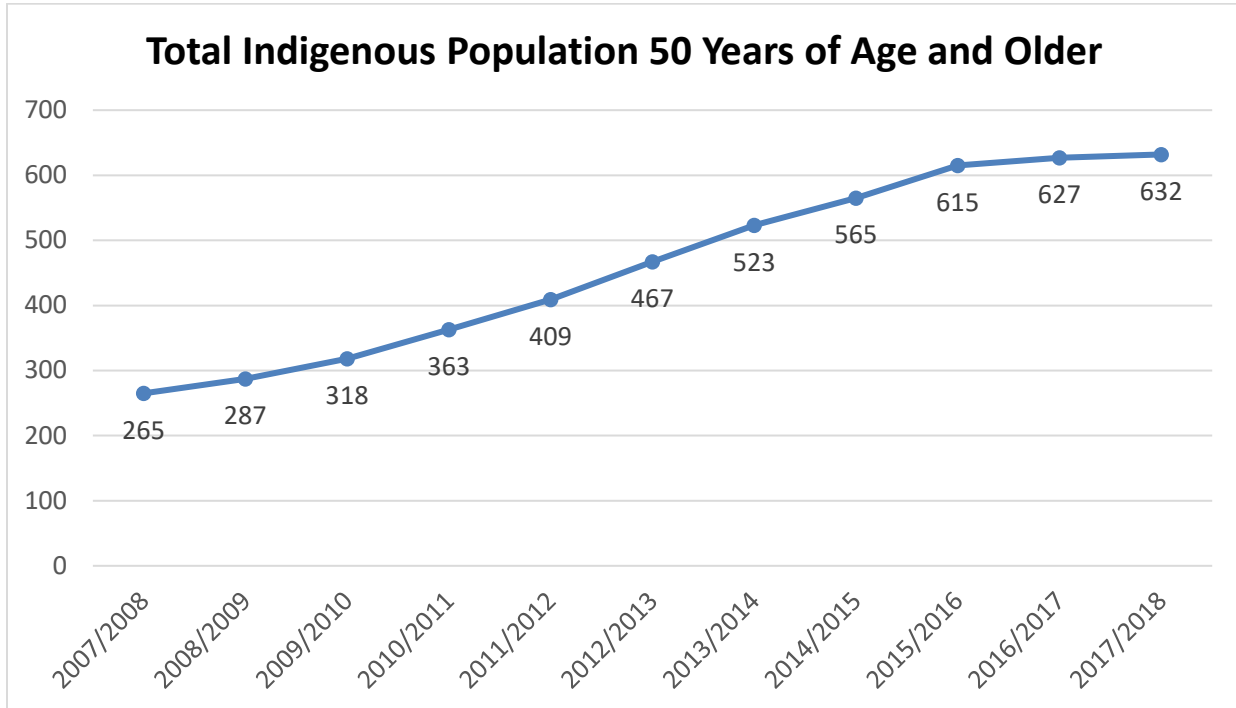
CSC Region	CSC Institution	Total # of inmates	% 50-64	% 65+	
ATLANTIC	ATLANTIC INSTITUTION	214	12%	1%	
	DORCHESTER PENITENTIARY	620	25%	8%	
	NOVA INSTITUTION FOR WOMEN	79	9%	0%	
	SHEPODY HEALING CENTRE	30	13%	7%	
	SPRINGHILL INSTITUTION	378	14%	2%	
ATLANTIC Total		1321	18%	5%	
QUEBEC	ARCHAMBAULT INSTITUTION	577	29%	7%	
	COWANSVILLE INSTITUTION	457	30%	3%	
	DONNACONA INSTITUTION	260	7%	1%	
	DRUMMOND INSTITUTION	297	22%	4%	
	FEDERAL TRAINING CENTRE	594	32%	13%	
	JOLIETTE INSTITUTION	99	16%	4%	
	LA MACAZA INSTITUTION	218	42%	11%	
	PORT CARTIER INSTITUTION	184	36%	3%	
	REGIONAL RECEPTION CTRE-QUEBEC	292	23%	5%	
	RRC (SHU) QUEBEC	24	25%	4%	
QUEBEC Total		3002	27%	6%	
ONTARIO	BATH INSTITUTION	446	32%	10%	
	BEAVER CREEK INSTITUTION	723	23%	5%	
	COLLINS BAY INSTITUTION	579	17%	2%	
	GRAND VALLEY INST FOR WOMEN	183	16%	2%	
	JOYCEVILLE ASSESSMENT UNIT	389	15%	3%	
	JOYCEVILLE INSTITUTION	273	25%	16%	
	JOYCEVILLE TD UNIT	73	15%	0%	
	MILLHAVEN ASSESSMENT UNIT	57	11%	0%	
	MILLHAVEN INSTITUTION	195	17%	4%	
	MILLHAVEN TD UNIT	7	0%	0%	
	REG.TREATMENT CENTRE-Bath Institution	36	25%	14%	
	REG.TREATMENT CENTRE-Millhaven Institution	79	22%	22%	
	WARKWORTH INSTITUTION	488	23%	6%	
	ONTARIO Total		3528	21%	6%

CSC Region	CSC Institution	Total	%50-64	% 65+
PRAIRIE	BOWDEN INSTITUTION	626	17%	4%
	DRUMHELLER INSTITUTION	726	11%	2%
	EDMONTON INSTITUTION	253	8%	0%
	EDMONTON INSTITUTION FOR WOMEN	169	8%	1%
	GRANDE CACHE INSTITUTION	241	9%	1%
	GRIERSON INSTITUTION	29	24%	3%
	OKIMAW OHCI HEALING LODGE	55	13%	0%
	PÊ SÂKÂSTÊW CENTRE	59	10%	3%
	REG. PSYCHIATRIC CENTRE - PRAIRIE	162	23%	6%
	SASKATCHEWAN PENITENTIARY	683	15%	2%
	STONY MOUNTAIN	812	9%	3%
	WILLOW CREE HEALING LODGE	53	13%	13%
PRAIRIE Total		3868	12%	2%
PACIFIC	FRASER VALLEY INSTITUTION	88	19%	5%
	KENT INSTITUTION	284	13%	2%
	KWÏKWËXWELHP	50	32%	12%
	MATSQUI INSTITUTION	375	16%	3%
	MISSION INSTITUTION	429	30%	8%
	MOUNTAIN INSTITUTION	407	25%	4%
	PACIFIC INSTITUTION	120	7%	4%
	REG. RECEPTION ASSESSMENT CTR.	102	15%	8%
	REGIONAL TREATMENT CENTRE(PACIFIC)	141	36%	21%
	WILLIAM HEAD INSTITUTION	193	37%	11%
PACIFIC Total		2189	23%	6%
Total		13908	20%	5%

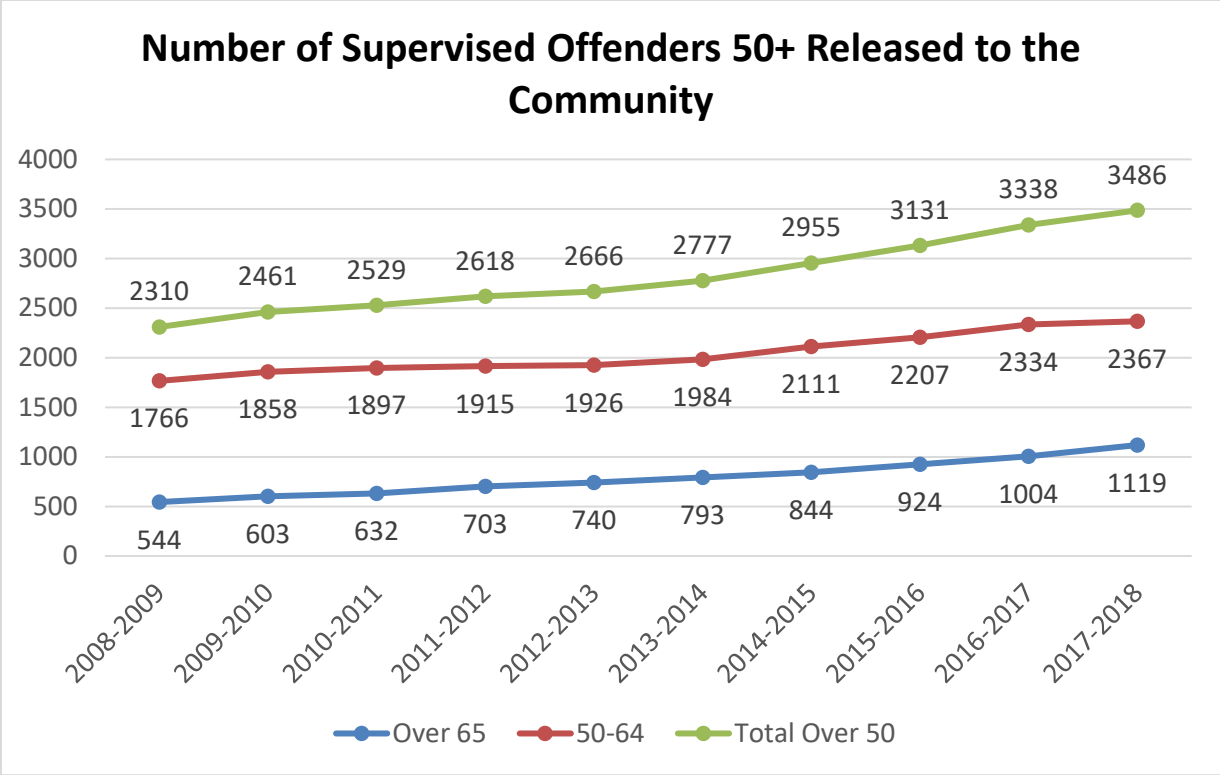
Source: CSC Data Warehouse. (Sep. 2018).



Source: CSC Data Warehouse. (June 2018).



Source: CSC Data Warehouse. (June 2018).



Source: CSC Data Warehouse. (July 2018).

	Less than 50 years of age	50-64 years of age	65 and over
Serving a life or indeterminate sentence	20%	46.4%	55.5%
Convicted of a sexual offence	11.2%	24.7%	37.9%
Classified as minimum security	20.4%	32.1%	45.1%
Have a high level of risk	62.5%	72.9%	68.3%
Sentence Length (for those serving a determinate sentence, average sentence length is)	4.9 years	6.1 years	7 years
Admission to segregation for personal safety	29%	34.7%	63.6%
Die as a result of natural causes	5 deaths	13 deaths	21 deaths
Have high levels of criminogenic need	66%	63%	46.9%
Of those involved in self-injurious behaviour:	93%	5.7%	1%
Of those involved in a use of force:	96%	3.5%	0.6%
Gang affiliation	14.2%	4.4%	2.2%
Among those institutionally charged:	91.5%	7.2%	1.2%

Source: CSC Data Warehouse. (July 2018).

References

- Abeling-Judge, D. (2016). Different social influences and desistance from crime. *Criminal Justice and Behavior, 43*(9), 1225-1241.
- Aday, R. (2003). Aging prisoners: Crisis in American corrections. *Santa Barbara, CA: Praeger Publishers.*
- Allenby, K., & McConnell, A. (2012). Older incarcerated women offenders: Social support and health needs. *Correctional Service of Canada.*
- Appleton, C., & van Zyl Smit, D. (Sep. 2017). A summary report on life imprisonment worldwide. *The University of Nottingham.*
- Bagnall, A. M., South, J., Hulme, C., Woodall, J., Vinall-Collier, K., Raine, G., Kinsella, K., Dixey, R., Harris, L., & Wright, N. A. (2015). Systematic review of the effectiveness and cost-effectiveness of peer education and peer support in prisons. *BMC Public Health, 15*, 290.
- Baidawi, S., Turner, S., Trotter, C., Browning, C., Collier, P., O'Connor, D., & Sheehan, R. (2011). Older prisoners: A challenge for Australian corrections. *Trends and Issues in Crime and Criminal Justice, No. 426.*
- Beaudette, J., & Stewart, L. (2014). Older offenders in the custody of the Correctional Service of Canada. *Research Brief.* Correctional Service of Canada.
- Bradford, J. (Dec. 2017). The regional treatment centres. *Unpublished report.*
- Chiu, T. (2010). It's about time: Aging prisoners, increasing costs and geriatric release. *New York, NY: Vera Institute of Justice.*
- Correctional Service of Canada. (Apr. 2014). A brief profile of incarcerated older men offenders. *Research Branch.*
- Correctional Service of Canada. (May. 2014). Older women offenders. *Research Branch.*

Correctional Service of Canada. (Aug. 2014). Older offenders in the custody of the Correctional Service of Canada. *Research Branch*.

Correctional Service of Canada. (Mar. 2017). National quality improvement and patient safety framework 2016-2019. *Health Services Sector*.

Correctional Service of Canada. (Nov. 2017a). Annual report on deaths in custody 2015/2016. *Research Branch*.

Correctional Service of Canada. (Nov. 2017b). Falls prevention and management guidelines. *Health Services Sector*.

Correctional Service of Canada. (Apr. 2018). The association of age and recidivism. *Research Branch*.

Correctional Service of Canada. (May 2018). Promoting wellness and independence of older persons in custody: A policy framework. *Draft document* (Unpublished).

Crawley, E., & Sparks, R. (2006). *Is there life after imprisonment? How elderly men talk about imprisonment and release*. *Criminology & Criminal Justice*. Retrieved from: <http://journals.sagepub.com/doi/pdf/10.1177/1748895806060667>

Curtin, T. (2007). The continuing problem of America's aging prison population and the search for a cost-effective and socially acceptable means of addressing it. *The Elder Law Journal*, 15(2), 473-502.

Delaney, R., Subramanian, R., Shames, A., Turner, T. (Oct. 2018). Reimagining Prison. *Vera Institute of Justice*.

Delveaux, K., & Blanchette, K. (2000). Results of an evaluation of the peer support program at nova institution for women. *Correctional Service of Canada*.

Department of Corrections. (Mar. 2016). High dependency unit expands. *Corrections Works*. New Zealand.

Department of Health. (2009). National Association for the Care and Resettlement of Offenders: A resource pack for working with older prisoners. *United Kingdom*.

Employment and Social Development Canada. (Retrieved on Feb. 21, 2019). "Thinking about aging in place." *Federal / Provincial / Territorial Ministers responsible for Seniors forum*. (Website).

Farrington, D., Loeber, R., & Howell, J. C. Young adult offenders: The need for more effective legislative options and justice processing. *Criminology and Public Policy*, 11(4), 729-750.

Fraser Institute. (Oct. 2017). "Canada's aging population and implications for government finances."

Gagnon, M. (2016). Stratégie d'intervention auprès des personnes âgées incarcérées et dans la communauté : Base théorique d'un modèle d'intervention géronto-criminologique. *Montréal, Quebec: Maison Cross Roads Corp.*

Gobeil, R. (2014). Older offenders in community-based residential facilities. *Correctional Service of Canada*.

Gobeil, R. (2014). Older women offenders. *Correctional Service of Canada*.

Gobeil, R., Allenby, K., & Greiner, L. (2014). A brief profile of incarcerated older men offenders. *Correctional Service of Canada*.

Greiner, L., & Allenby, K. (2010). A descriptive profile of older women offenders. *Correctional Service of Canada*.

Handtke, V., Wangmo, T., Elger, B., & Bretschneider, W. (2017). New guidance for an old problem: early release for seriously ill and elderly prisoners in Europe. *The Prison Journal*, 97(2), 224-246.

Haney, C. (2002). The psychological impact of incarceration: Implications for post-prison adjustment. *Paper submission for the "From Prison to Home" Conference (January 30-31, 2002)*.

Harrison, T. (Dec. 2006). True grit: An innovative program for elderly inmates. *Corrections Today*, 46-49.

Her Majesty's Inspectorate of Prisons. (Jan. 2016). Life in prison: Peer support. A *Findings Paper*. England and Wales.

House of Commons Justice Committee. (2013). Older Prisoners - Fifth Report of Session 2013-14. *House of Commons London: The Stationery Office Limited*.

Human Rights Watch. (Jan. 2012). "Old behind bars: The aging prison population in the United States."

Human Rights Watch. (2012). "The answer is no, too little compassionate release in US federal prisons."

Iftene, A. (2016). "Unlocking the doors to Canadian older inmate mental health data: Rates and potential legal responses," *International Journal of Law and Psychiatry*, 47, 36-44.

Iftene, A. (2017a). The case for a new compassionate release statutory provision. *Alberta Law Review*, 54(4).

Iftene, A. (2017b). The pains of incarceration: Aging, rights and policy in federal penitentiaries. *Canadian Journal of Criminology and Criminal Justice*, 59(1).

Irish Penal Reform Trust. (2016). In here, time stands still: The rights, needs, and experiences of older people in prison.

Jiwani, B. (June 30, 2017). Ethics analysis of peer assisted living program, CSC. *Ethics Incorporated*.

Kerbs, J. J., & Jolley, J. M. (2007). Inmate-on-inmate victimization among older male prisoners. *Crime and Delinquency*, 53(2), 187-218.

Kerbs, J. J., & Jolley, J. M. (2008). A commentary of age segregation for older prisoners: Philosophical and pragmatic considerations for correctional systems. *Criminal Justice Review*, 34(1), 119-139.

Kristen, J. M., Walker, J. D., & Shawande, M. (2013). The emergence of dementia as a health concern among First Nations populations in Alberta, Canada. *Canadian Journal of Public Health*, 104(1).

Levine, R., & Wou, M. (2000). Prisoners of age: The Alcatraz exhibition. *Montreal, Quebec: Synchronicity Productions Inc.*

Library of Congress. (2018). H.R.5682 – First Step Act. *United States.*

Maschi, T., Kwak, J., Ko, E., & Morrissey, M. B. (2012). Forget me not: Dementia in prison. *The Gerontologist*, 52(4), 441-451.

Maschi, T., Viola, D., & Sun, F. (2013). The high cost of international aging prisoners crisis: Well-being as the common denominator for action. *The Gerontologist*, 53(4), 543-554.

Morton, J. B. (2001). Implications for corrections of an aging prison population. *Corrections Management Quarterly* 5(1), 78-88.

Motiuk, L., & Hayden, M. (2016). Age structure of federal Indigenous and non-Indigenous offender populations. *Correctional Service of Canada.*

National Institute for Health Research. (2013). Health and social care services for older male adults in prison: The identification of current service provision and piloting of an assessment and care planning model. *Health Services and Delivery Research*, 1(5): *United Kingdom.*

Office of the Auditor General of Canada. (2018). Report 6: Community supervision – Correctional Service Canada. *Fall reports of the Auditor General of Canada to Parliament of Canada*.

Office of the Correctional Investigator. (2011). Annual Report 2010-2011.

Office of the Correctional Investigator. (Dec. 2013). An investigation of the Correctional Service's mortality review process.

Office of the Correctional Investigator. (2015). Annual Report 2014-2015.

Office of the Correctional Investigator. (2017). Annual Report 2016-2017.

Office of the Inspector General. (2015). The impact of an aging inmate population on the Federal Bureau of Prisons. *United States Department of Justice*.

Prisons and Probation Ombudsman. (2013). Learning from PPO Investigations: End of life care. *London: England, United Kingdom*.

Prisons and Probation Ombudsman. (2017). Learning from PPO investigations: Older Prisoners. *London: England, United Kingdom*.

Pro, G., & Marzell, M. (2017). Medical parole and aging prisoners: A qualitative study. *Journal of Correctional Health Care*, 23(2), 162-172.

Public Health England. (2017). Health and social care needs assessments of the older prisoner population: A Guidance Document.

Public Safety Canada (2018). Corrections and conditional release statistical overview – Annual report 2017-18.

Quality End-of-Life Care Canada & The Canadian Hospice Palliative Care Association (May 2012). Synthesis of recommendations from national reports on hospice palliative care.

Quality End-of-Life Care Canada & The Canadian Hospice Palliative Care Association. (Dec. 2012). Integrating a palliative approach into the management of chronic, life-threatening diseases: Who, how and when.

Quality End-of-Life Care Canada & The Canadian Hospice Palliative Care Association. (Mar. 2013). Innovative models of integrated hospice palliative care.

Quality End-of-Life Care Canada & The Canadian Hospice Palliative Care Association. (Mar. 2015). The national framework: A roadmap for an integrated palliative approach to care.

Richter, M., & Hostsettler, U. (2017). End of life in prison: Talking across disciplines and across countries. *Journal of Correctional Health Care*, 23(1), 11-19.

Stal, M. (2012). Treatment of older and elderly inmates within prisons. *Journal of Correctional Health Care*, 19(1), 69-73.

Statistics Canada. (2017). Aboriginal statistics at a glance: Life expectancy.

Stewart, J. (2000). The reintegration effort for long-term infirm and elderly federal offenders (relief) program. *CSC Forum on Corrections Research*, 12(3).

Sweeten, G., Piquero, A. R., & Steinberg, L. (2013). Age and the exploration of crime revisited. *Journal of Youth and Adolescence*, 42(6).

Thivierge-Rikard, R. V., & Thompson, M. S. (2007). The association between aging inmate housing management models and non-geriatric health services in state correctional institutions. *Journal of Aging & Social Policy*, 19(4), 39-56.

Threinen, D. W. (2018). Effects of long-term incarceration on the elderly. *Journal of Prisoners on Prisons*, 27(1).

Turner, S., & Trotter, C. (2010). Growing old in prison? A review of national and international research on Ageing Offenders. *Department of Justice: Corrections Victoria*.

United Nations Office on Drugs and Crime. (2009). Handbook on Prisoners with special needs.

Uzoaba, J. H. E. (1998). Managing older offenders: Where do we stand? *Correctional Service of Canada*.

Victoria Department of Justice and Regulation. (2015). Corrections ageing prisoner and offender policy framework, 2015-20.

Virginia General Assembly. (1994). Conditional release of geriatric prisoners, s. 53.1-40.01.

Wilkinson, D. J., & Caulfield, L. S. (2017). The perceived benefits of an arts project for health and wellbeing of older offenders. *Europe's Journal of Psychology, 13*(1), 16-27.

Williams, B., A., Ahalt, C., & Greifinger, R. B. (2014). The older prisoner and complex chronic medical care. (Chapter 19). *World Health Organization – Prisons and Health*, 165-170.

Williams, B. A., Rothman, A., & Ahalt, C. (2017). End of life and serious illness: For seriously ill prisoners, consider evidence-based compassionate release policies. *Health Affairs Blog*.

Williams, B. A., Stern, M. F., Mellow, J., Safer, M., & Greifinger, R. B. (2012). Aging in correctional custody: Setting a policy agenda for older prisoner health care. *American Journal of Public Health, 102*(8), 1475-1481.

Woodall, J., South, J., Dixey, R., de Viggiani, N., & Penson, W. (2015). Expert views of peer-based interventions for prisoner health. *International Journal of Prison Health, 11*(2), 87-97.

Yorston, G., & Taylor, P. (2016). Commentary: Older offenders – no place to go? *Journal of the American Academy of Psychiatry and Law*, 34(3), 333-337.

Zinger, I. (2016). Human rights and federal corrections: A commentary on a decade of tough on crime policies in Canada. *Canadian Journal of Criminology and Criminal Justice*, 58(4), 609-627.